



MXI-Driver

MXI-Driver Installation Manual for WINDOWS 10

Manual de instalación del MXI-Driver para WINDOWS 10

Manuel d'installation du pilote MXI pour WINDOWS 10

CONTENTS

MXI-Driver Installation Manual for WINDOWS 10	3 – 13
Manual de instalación del MXI-Driver para WINDOWS 10	14 – 24
Manuel d'installation du pilote MXI pour WINDOWS 10	25 – 36

Dear valuable Customer,

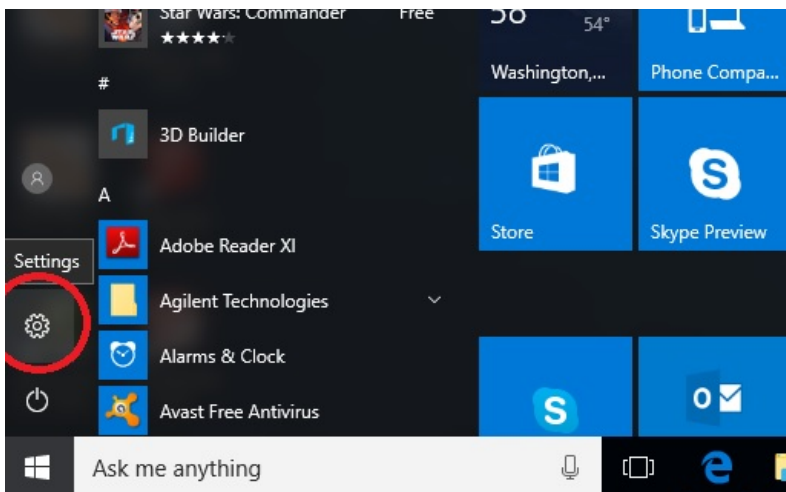
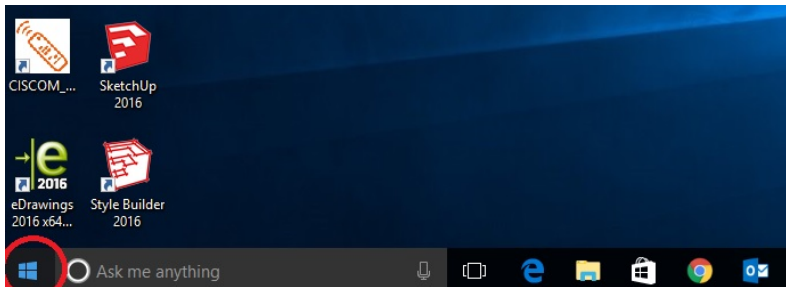
Please follow the steps below to install the MXI-driver at your WIN10 computer

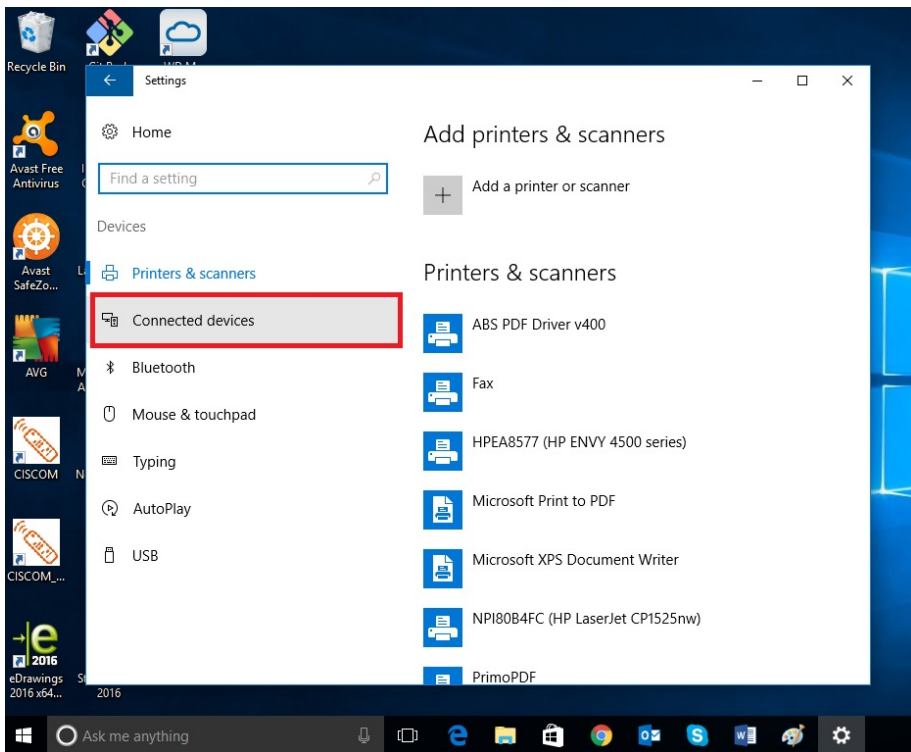
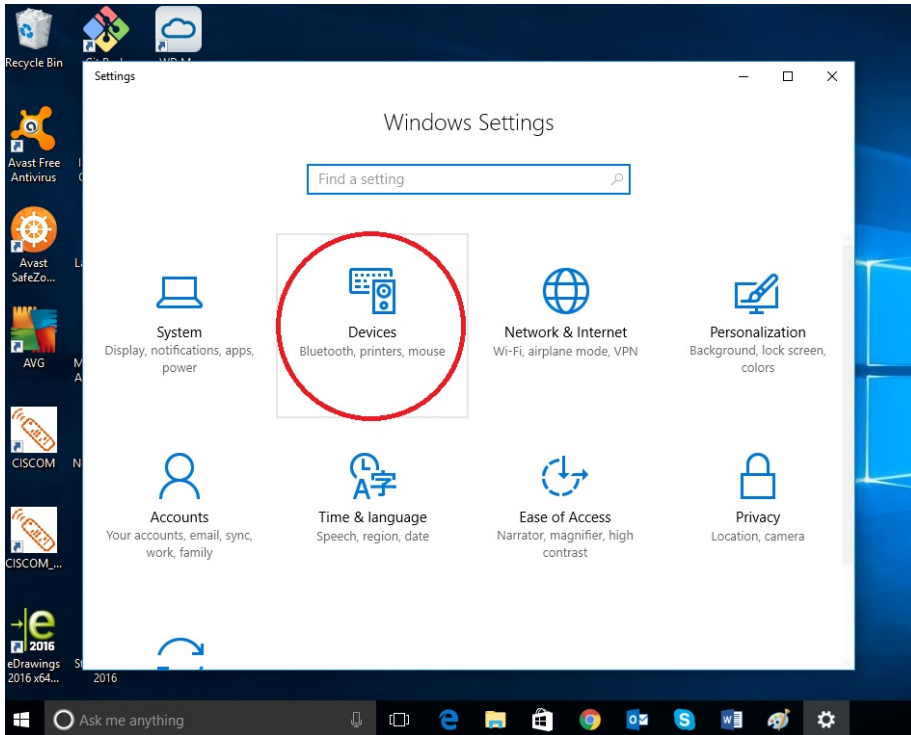
Part 1: Download and Install FTDI VCP Driver

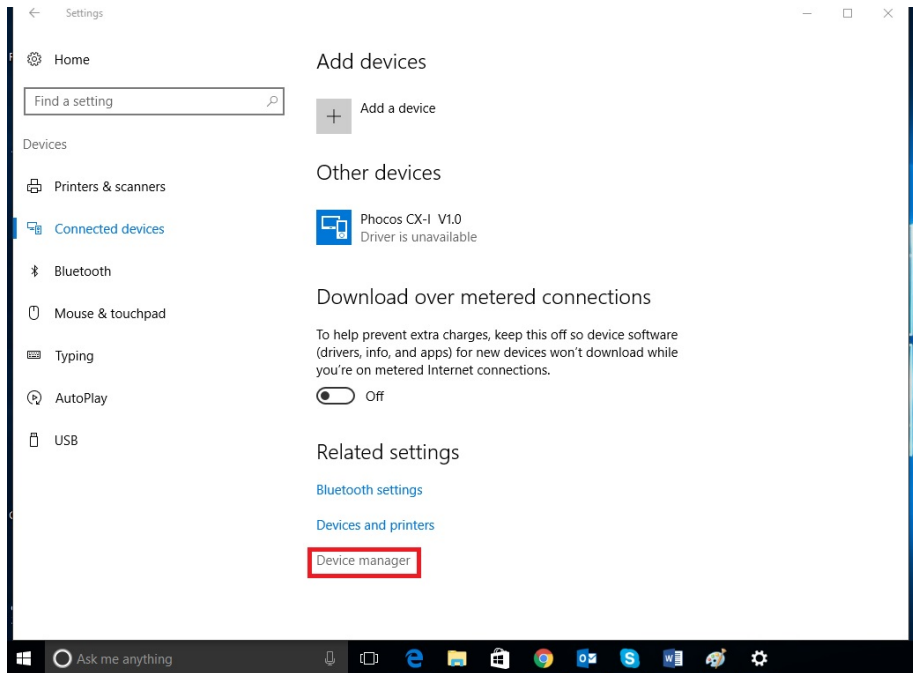
- Download the FTDI VCP Driver on
- http://www.ftdichip.com/Drivers/CDM/CDM21224_Setup.zip
- Extract all files from compressed zip folder
- Run CDM21224_Setup Application
- Install FTDI VCP Driver

Part 2: Install USB-Serial Converter

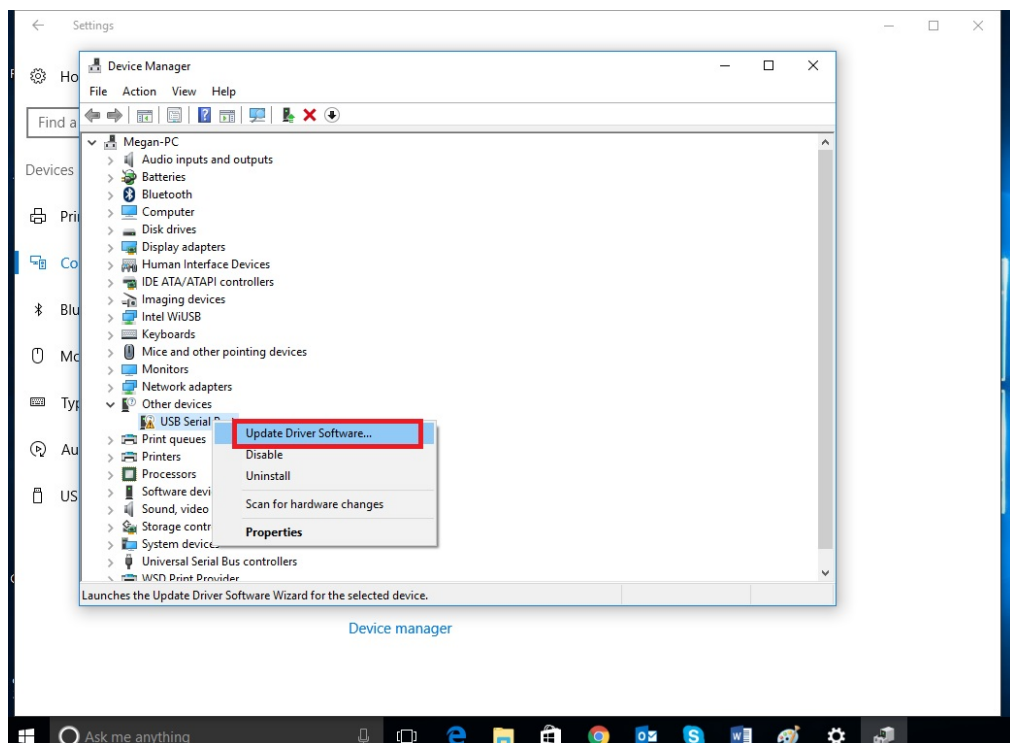
- Plug in MXI to USB-port
- (Step 1 – step 5) Open the Device Manager in Windows Control Panel



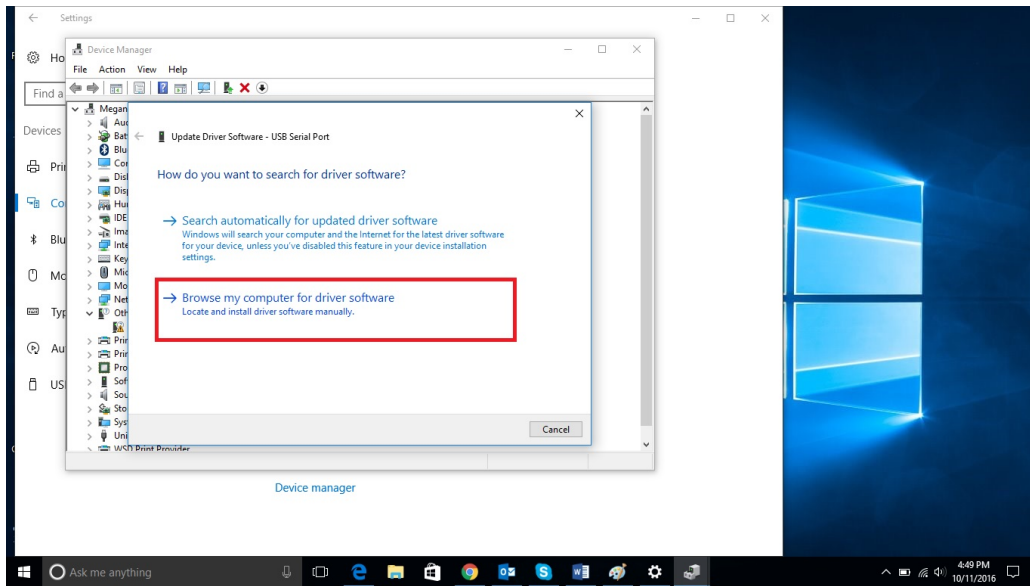




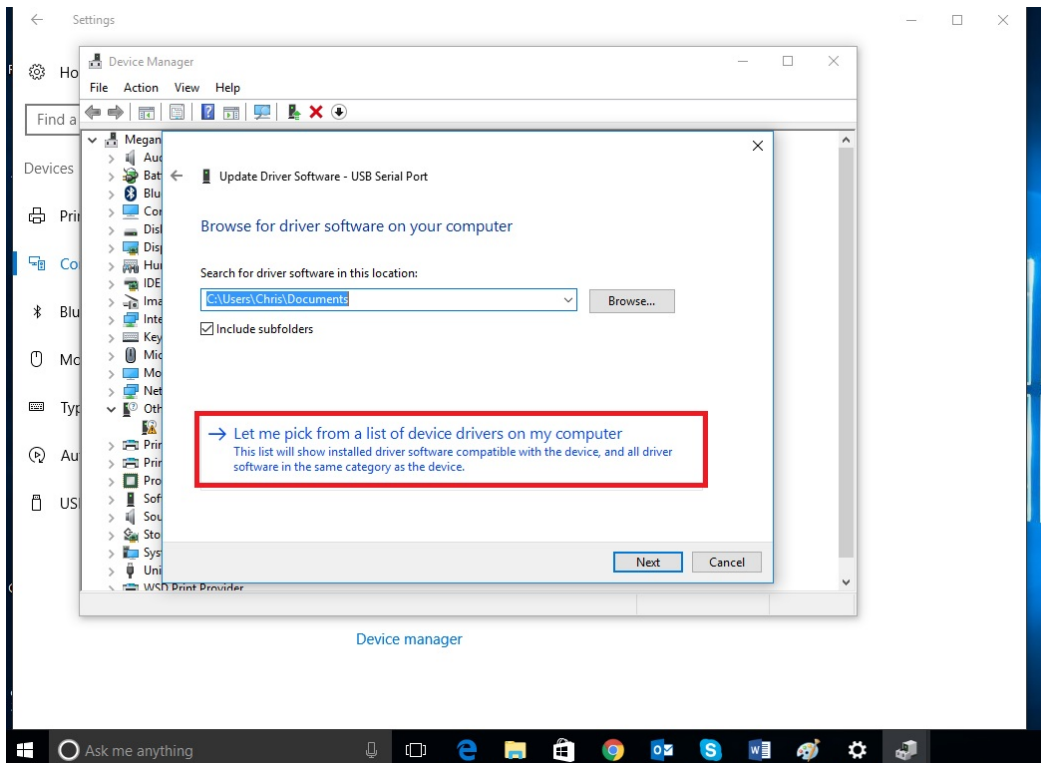
- (Step 6_2) Locate and right click on Phocos MXI and select 'Update Driver Software' from the context menu



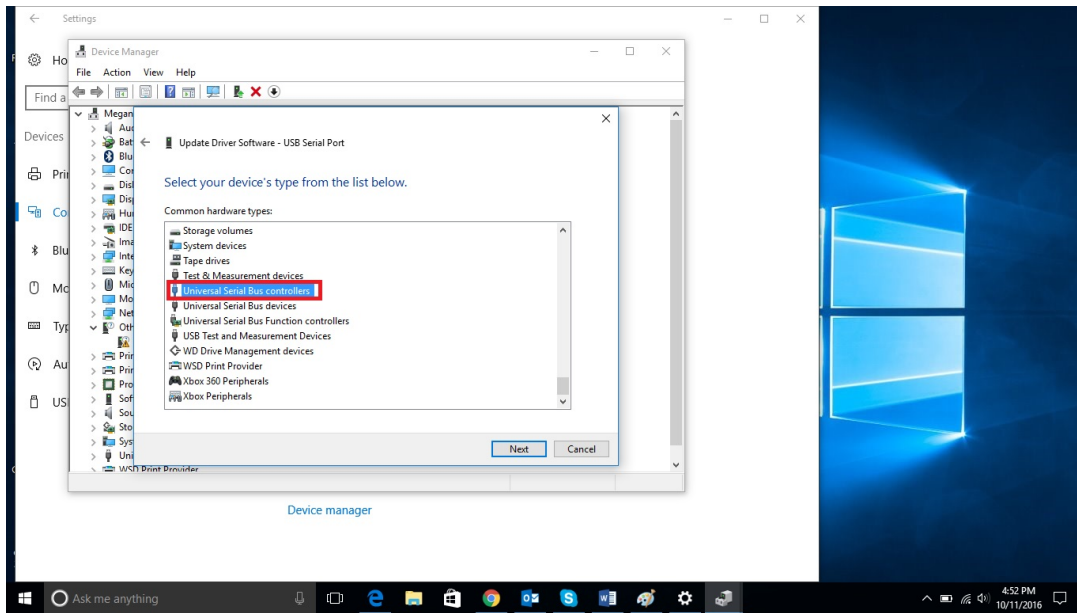
- (Step 7_2) Select “Browse my computer for driver software”



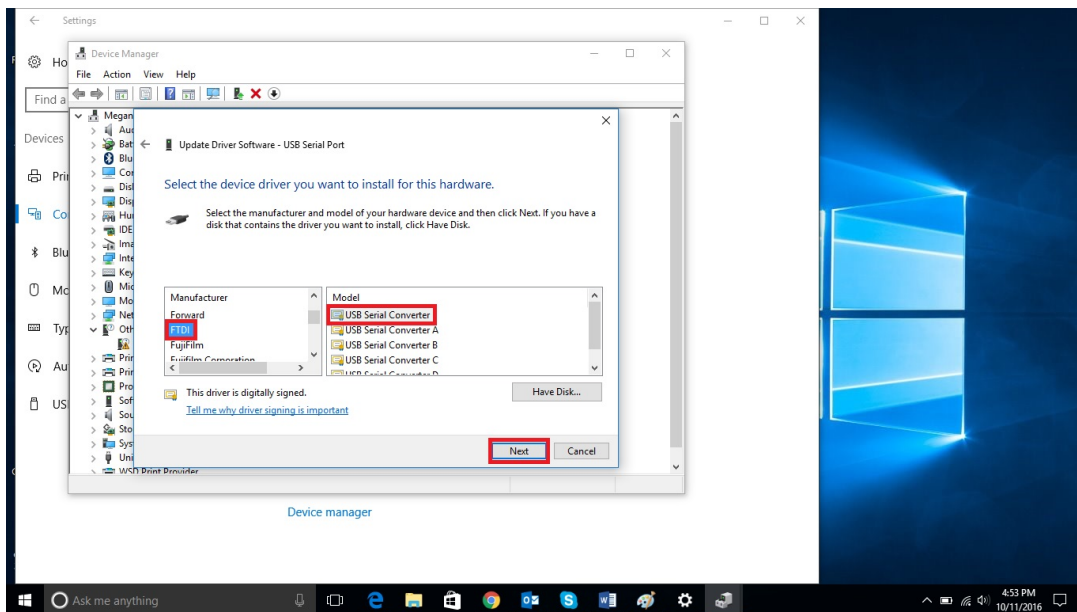
- (Step 8_2) Select “Let me pick from a list of device drivers on my computer” at the bottom of the window.



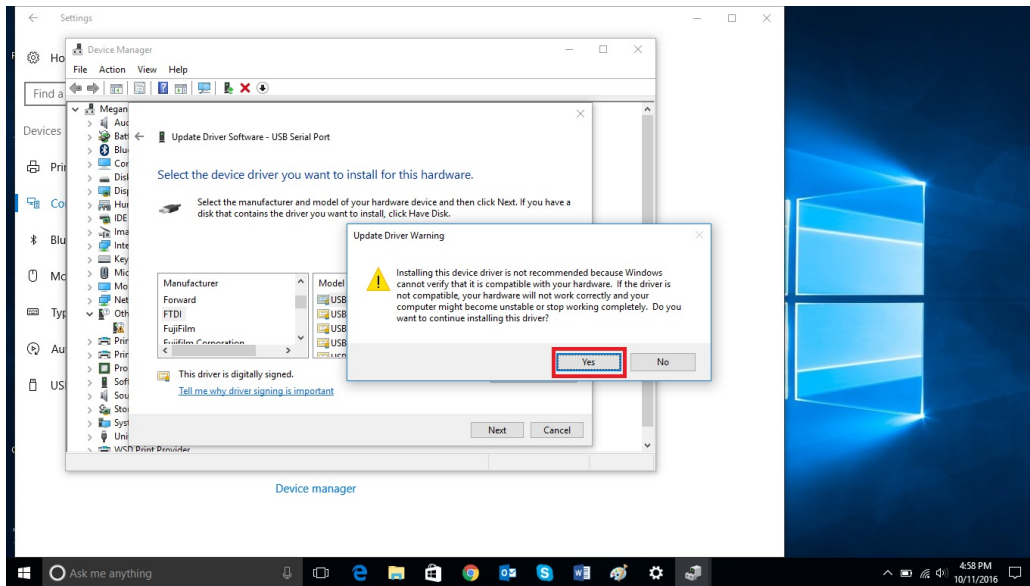
- (Step 9_2) Select “USB-Controller”



- (Step 10_2) Select “FTDI” and “USB Serial Converter”



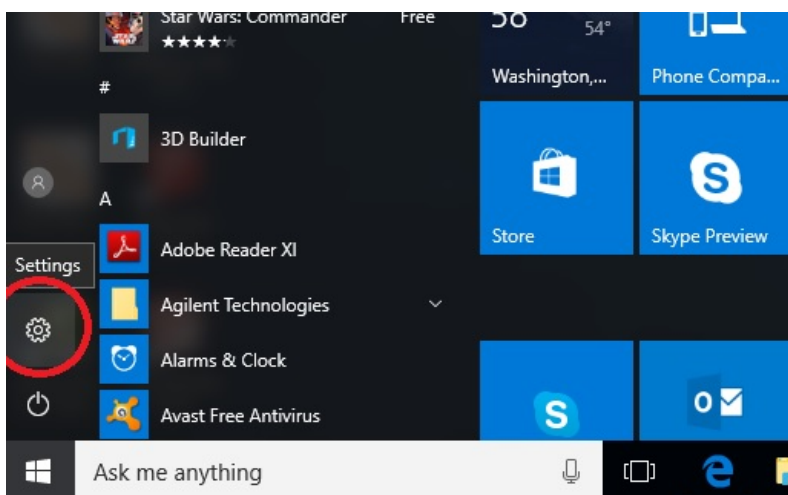
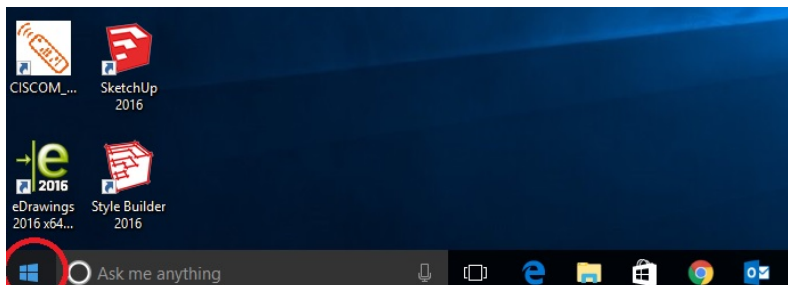
- (Step 11_2) Ignore the alert and select “yes” to continue the installation

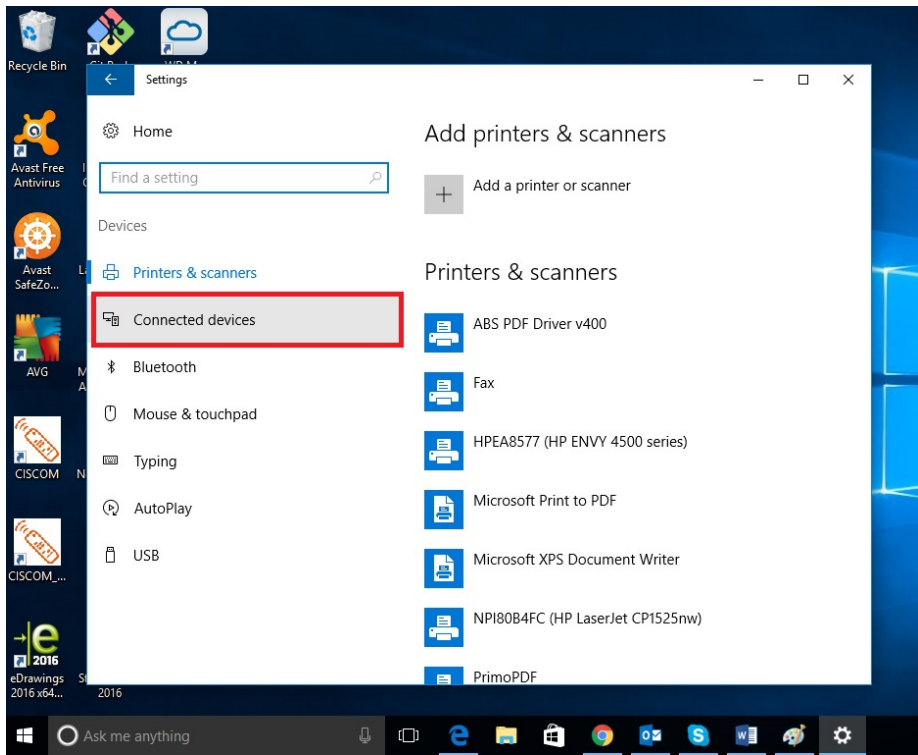
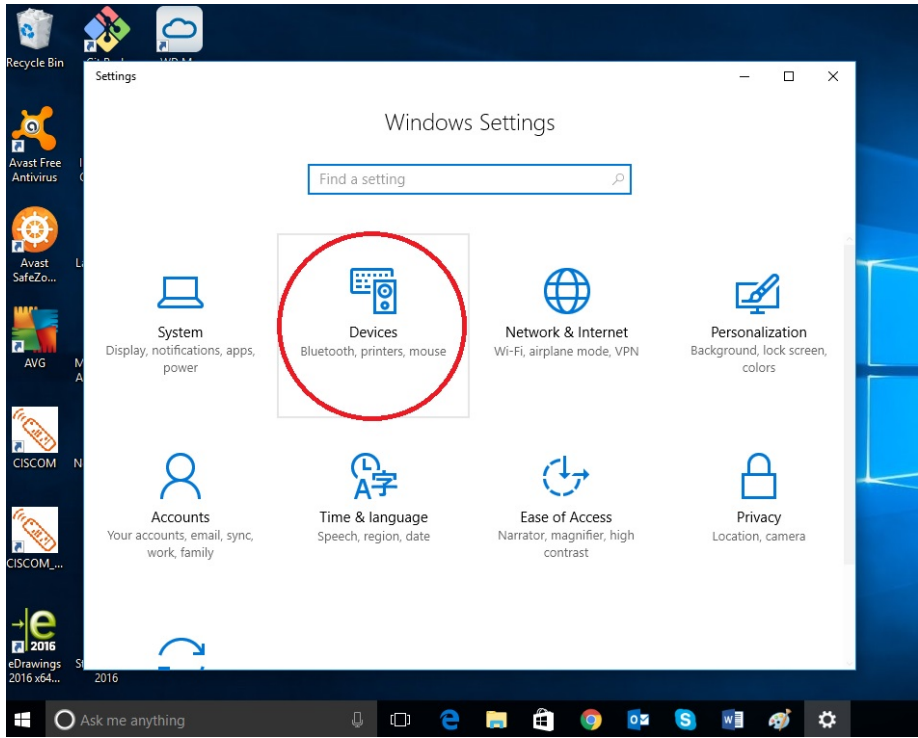


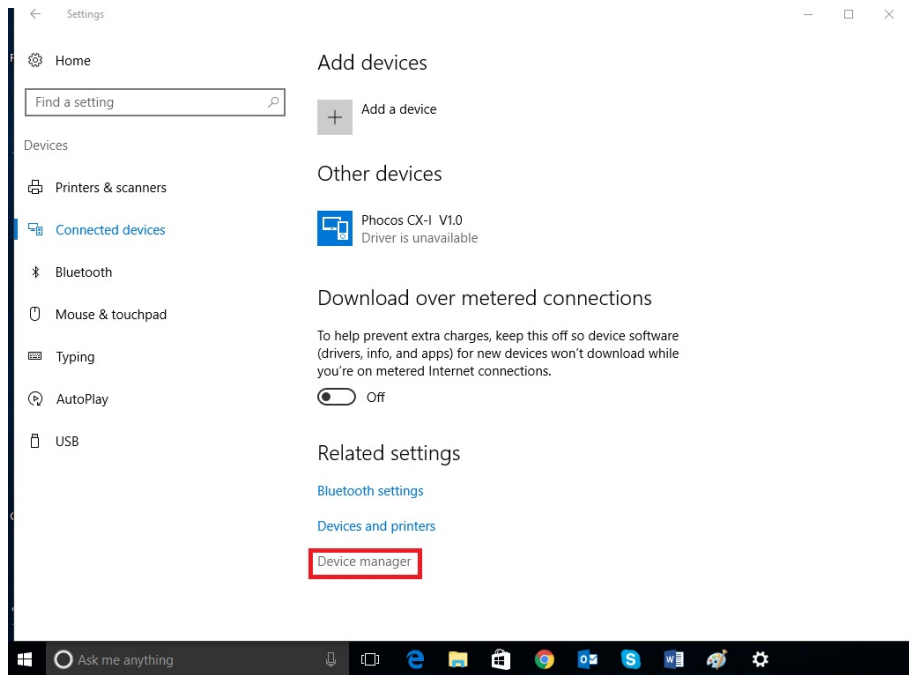
- Second step completed – “USB-Serial Converter” is installed
- Close all windows (except for the device manager)

Part 3: Install USB-Serial Port

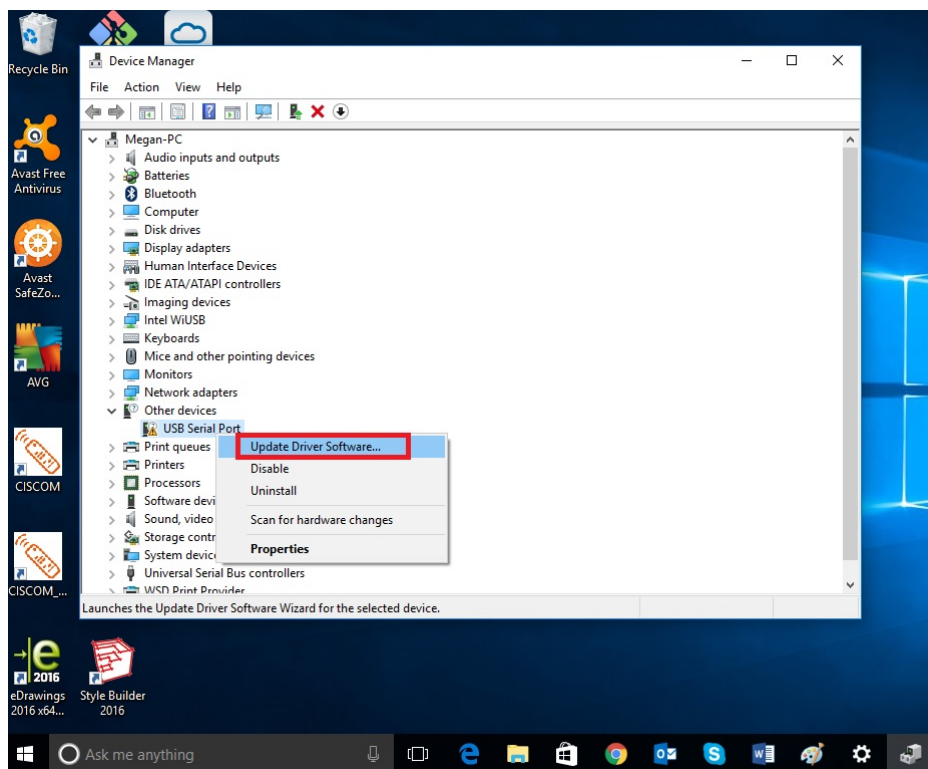
- (Step 1 – step 5) Open the Device Manager in Windows Control Panel (if not already open)



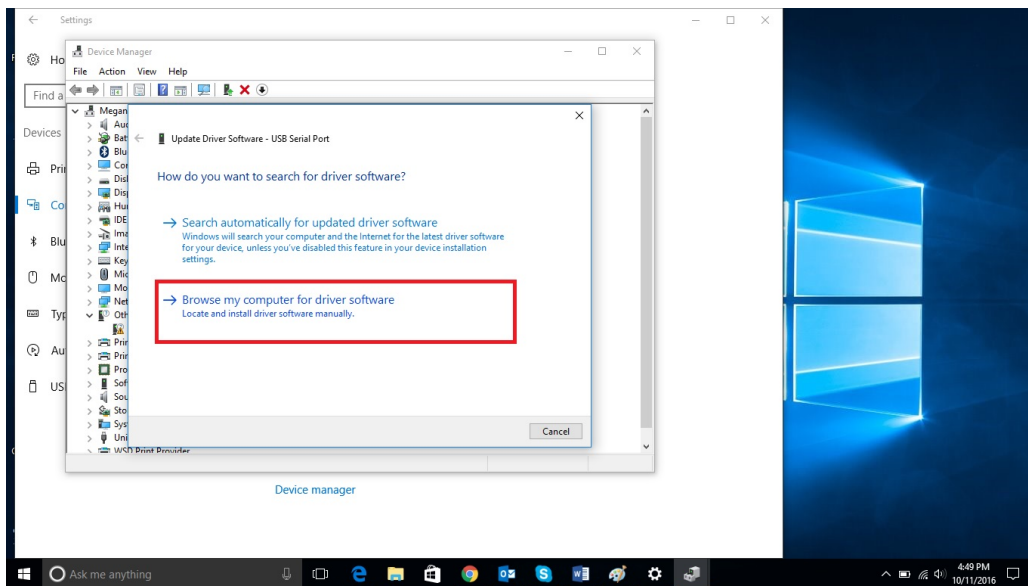




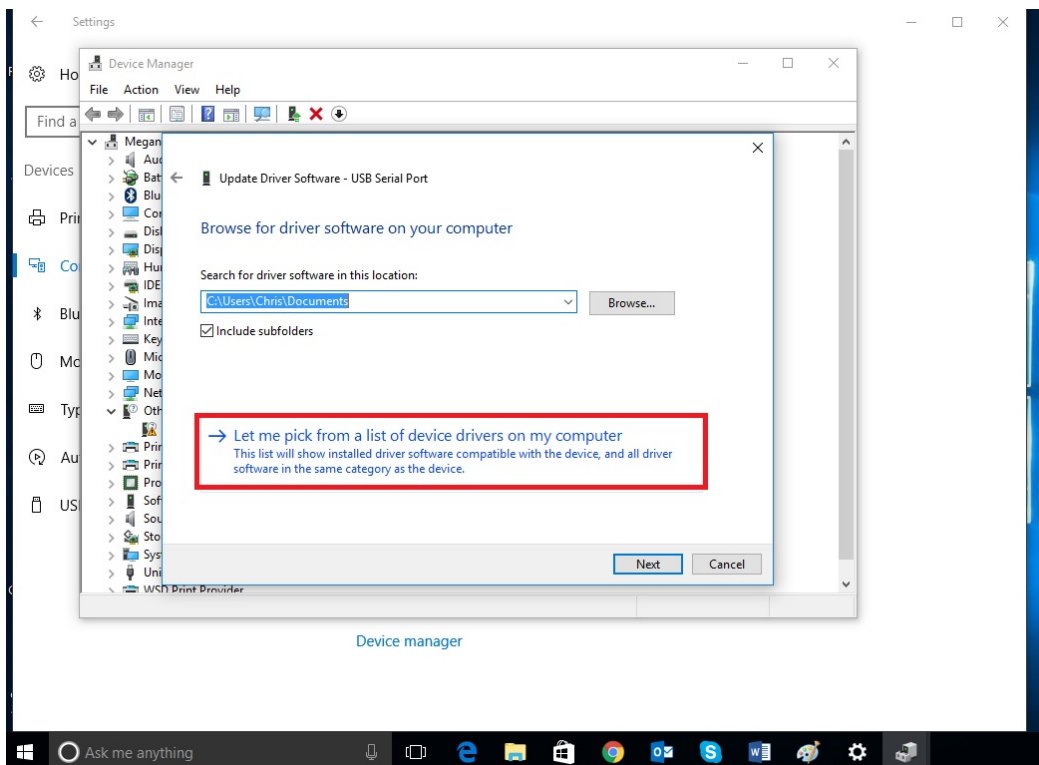
- (Step 6_3) Locate and Right click on “USB-Serial Port” and select 'Update Driver Software' from the context menu.



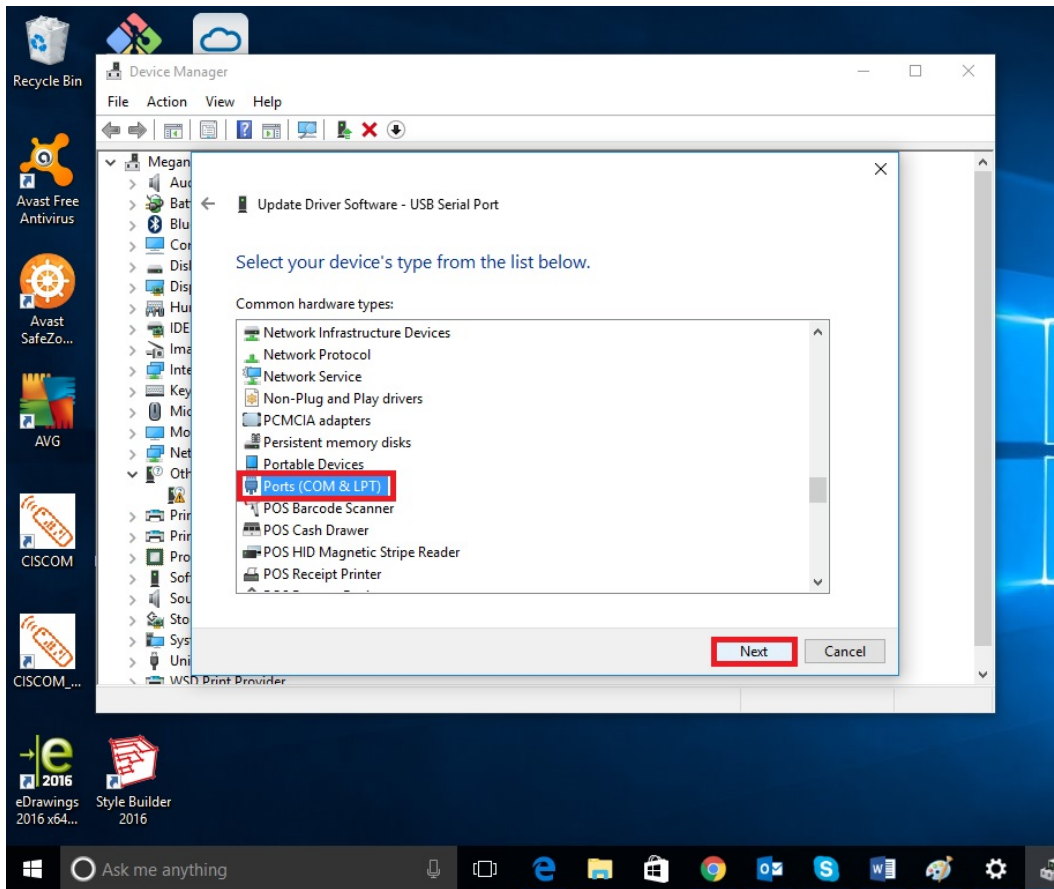
- (Step 7_3) Select “Browse my computer for driver software”



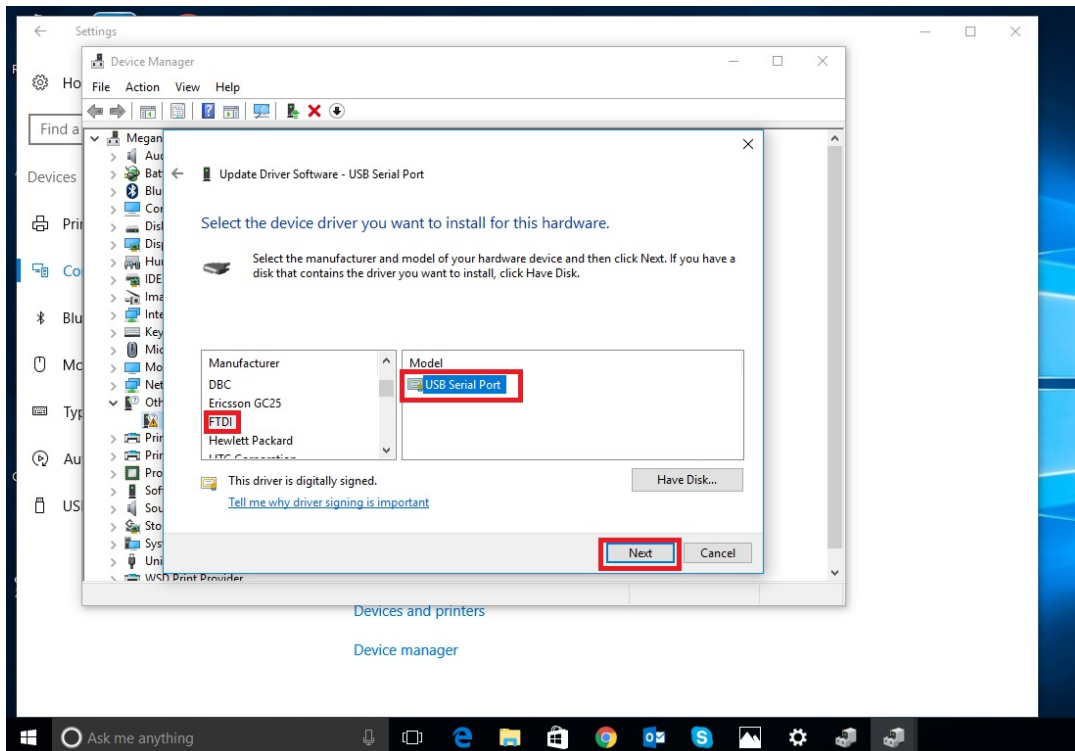
- (Step 8_3) Select “Let me pick from a list of device drivers on my computer” at the bottom of the window



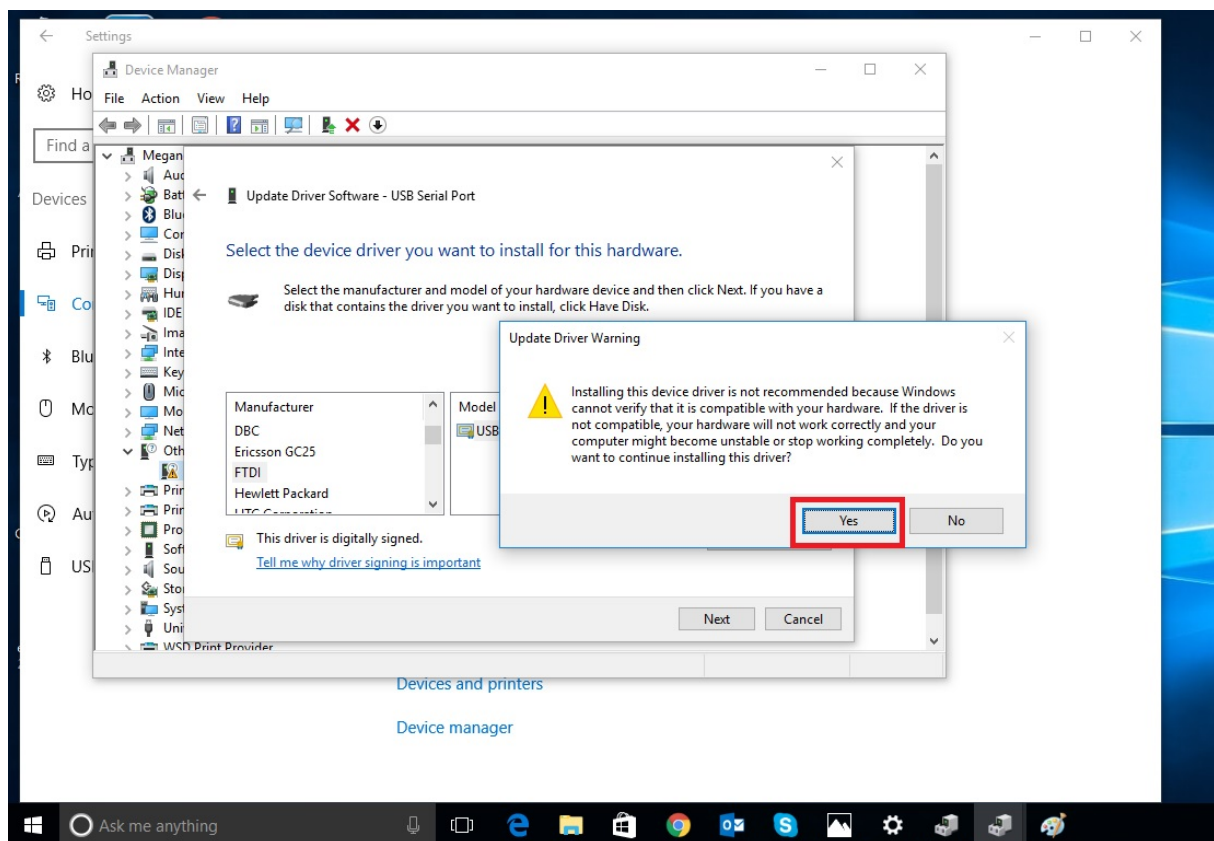
- (Step9_3) Select “Ports (COM & LPT)”



- (Step 10_3) Select “FTDI” and “USB Serial Port”



- (Step 11_3) Ignore the alert and select “yes” to continue the installation



- Third step completed – “USB-Serial Port” is installed
- Close all windows
- Now you can use the MXI device

Troubleshoot Tips

- If installation fails at any point, please make sure Windows updates have all been completed.
- If having issues installing, don't hesitate to try a different USB port.

Subject to change without notice
Version: 20170201

Phocos AG
Magirus-Deutz-Str. 12
89077 Ulm,
Germany
info@phocos.com
www.phocos.com

Apreciado cliente,

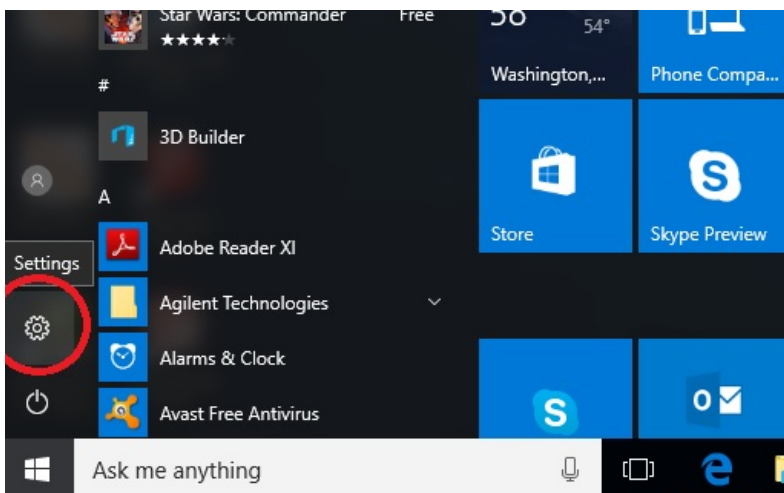
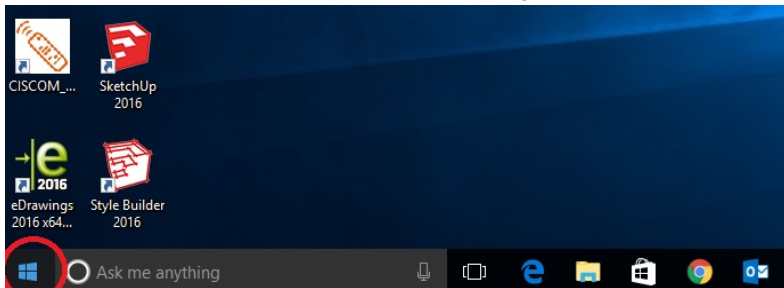
Siga los siguientes pasos para instalar el driver en su computadora con WIN10.

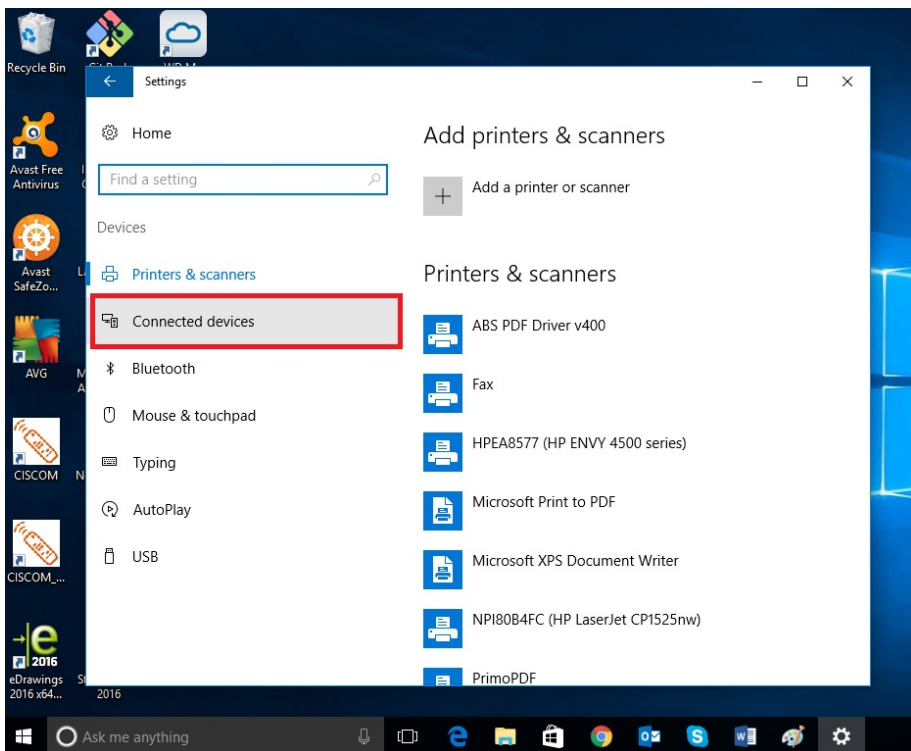
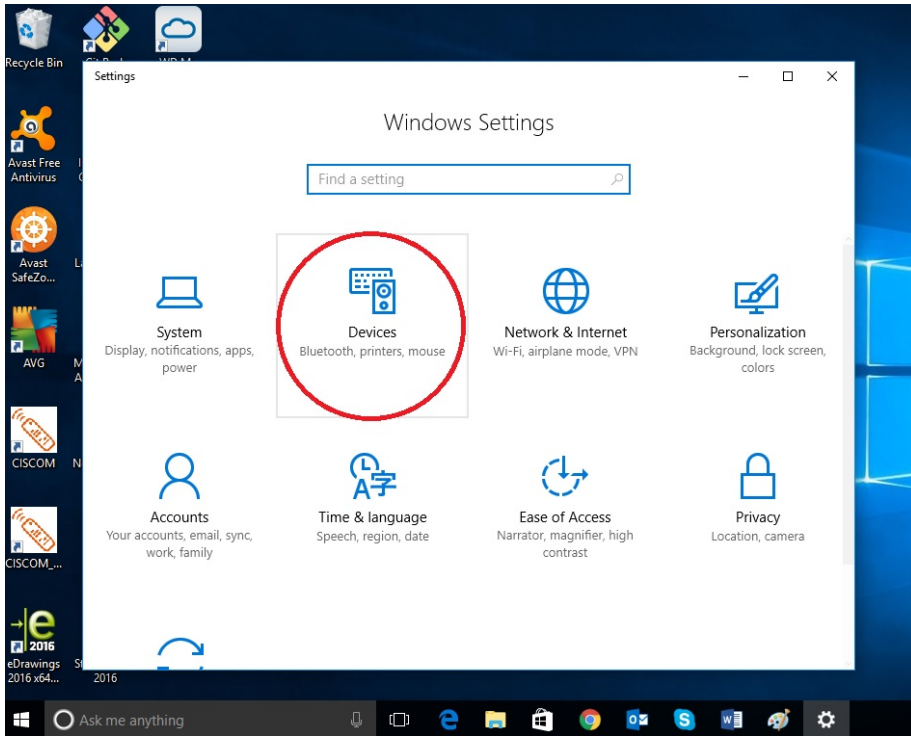
Parte 1: Descargue e instale el Driver FTDI VCP

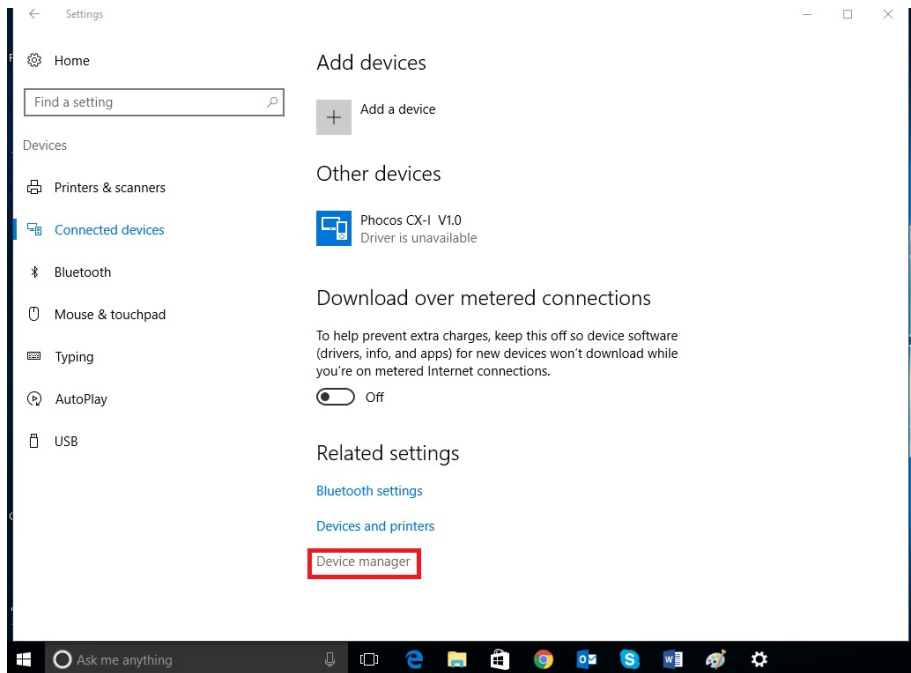
- Descargue FTDI VCP Driver en
- http://www.ftdichip.com/Drivers/CDM/CDM21224_Setup.zip
- Extraiga todos los archivos de la carpeta comprimida.
- Ejecute CDM21224_Setup Application
- Instale FTDI VCP Driver

Parte 2: Instalación USB-Serial Converter

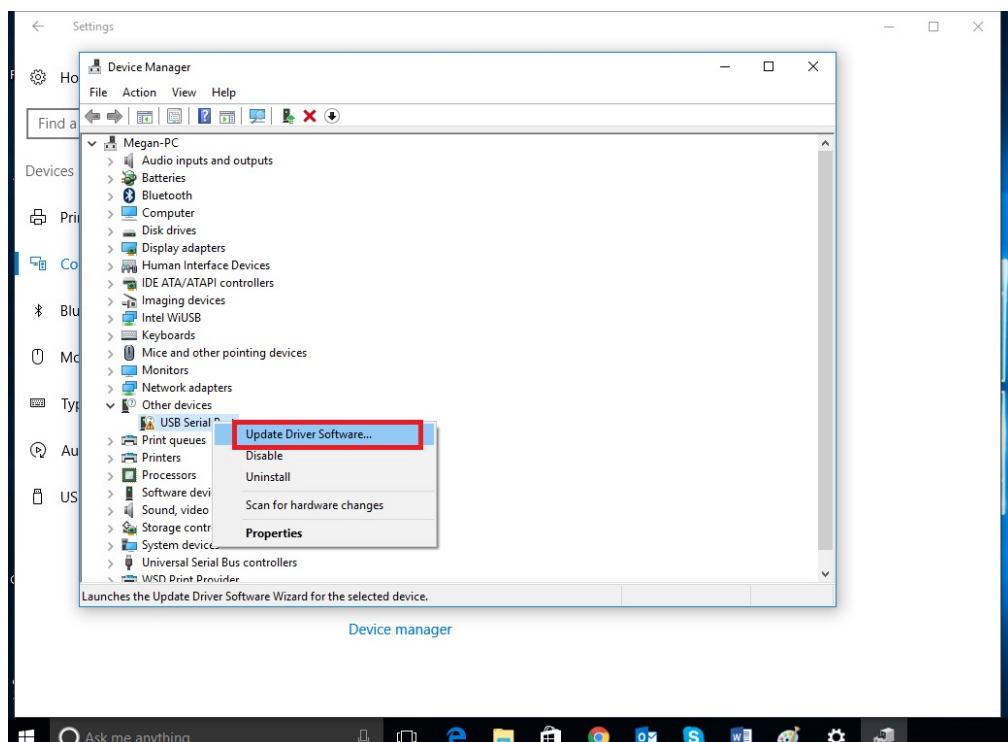
- Inserte MXI en el puerto USB
- (Paso 1 – Paso 5) abra el Device Manager en panel de control de Windows



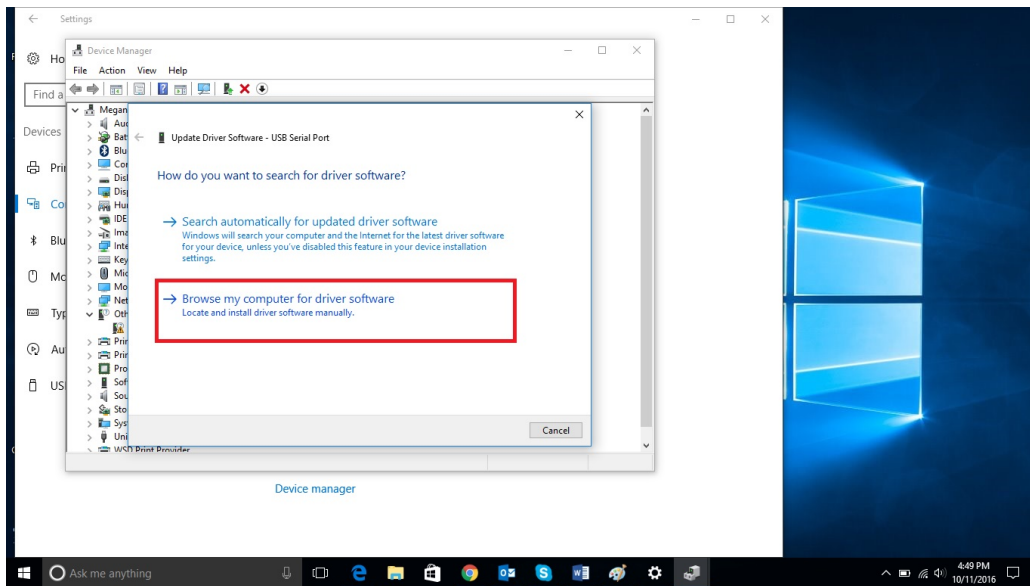




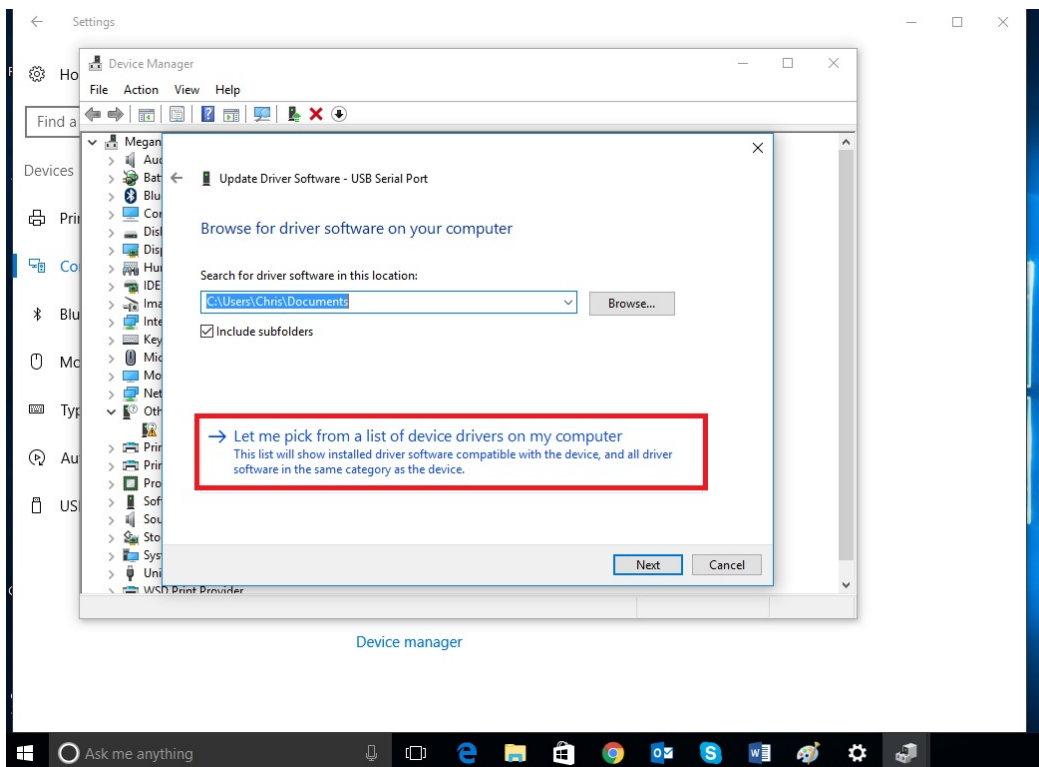
- (Paso 6_2) Marque y click botón derecho en Phocos MXI y seleccione 'Update Driver Software' desde menu



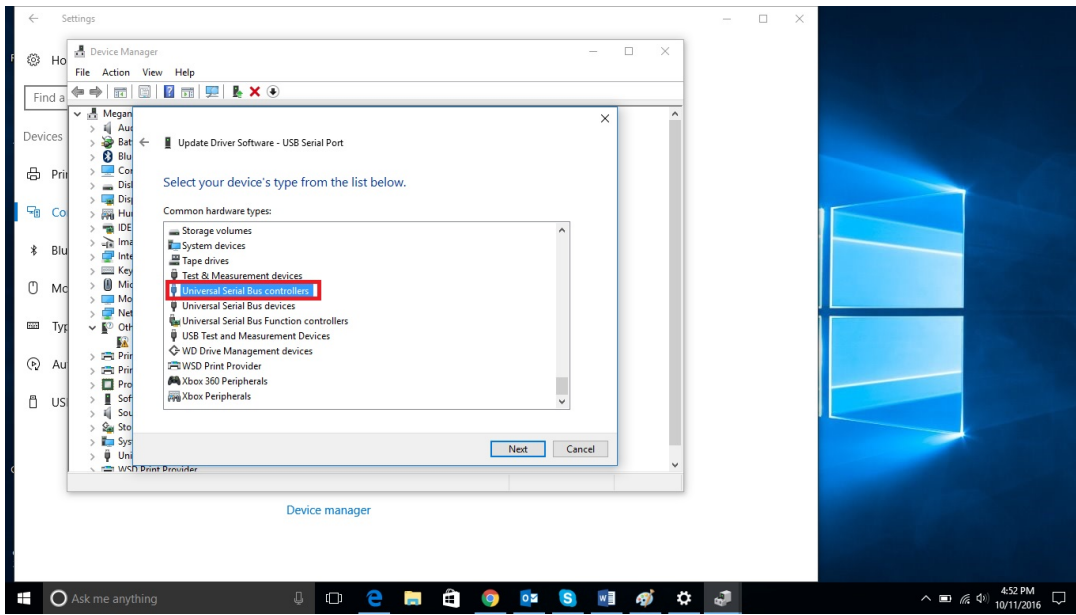
- (Paso 7_2) Seleccione “Browse my computer for driver software” (Buscar en mi computadora el driver software)



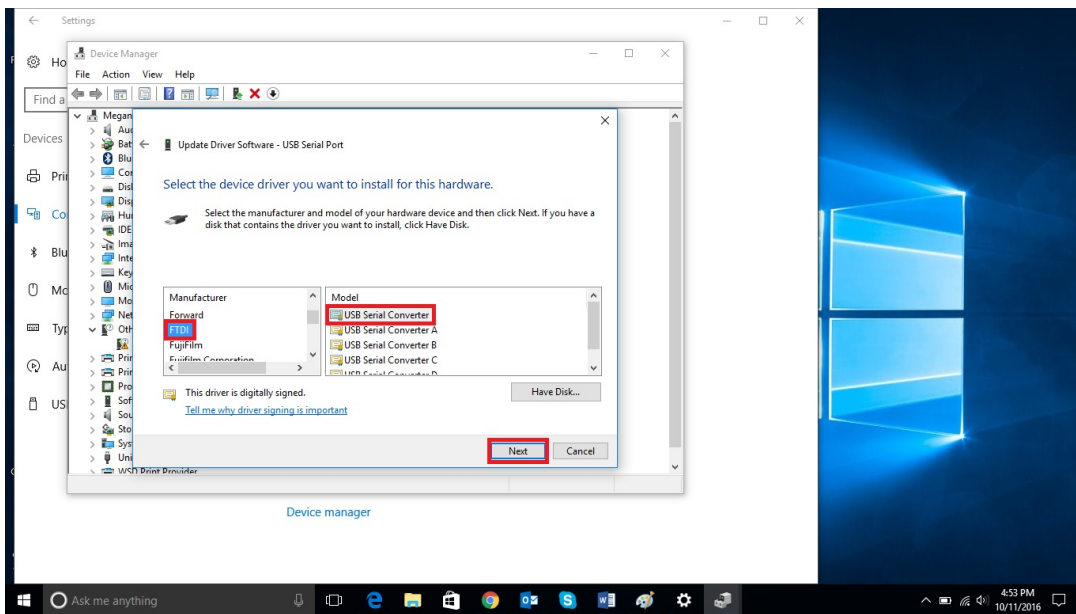
- (Paso 8_2) Seleccione “Let me pick from a list of device drivers on my computer” (Elegir drivers en mi computadora de la lista) en la parte baja de la ventana



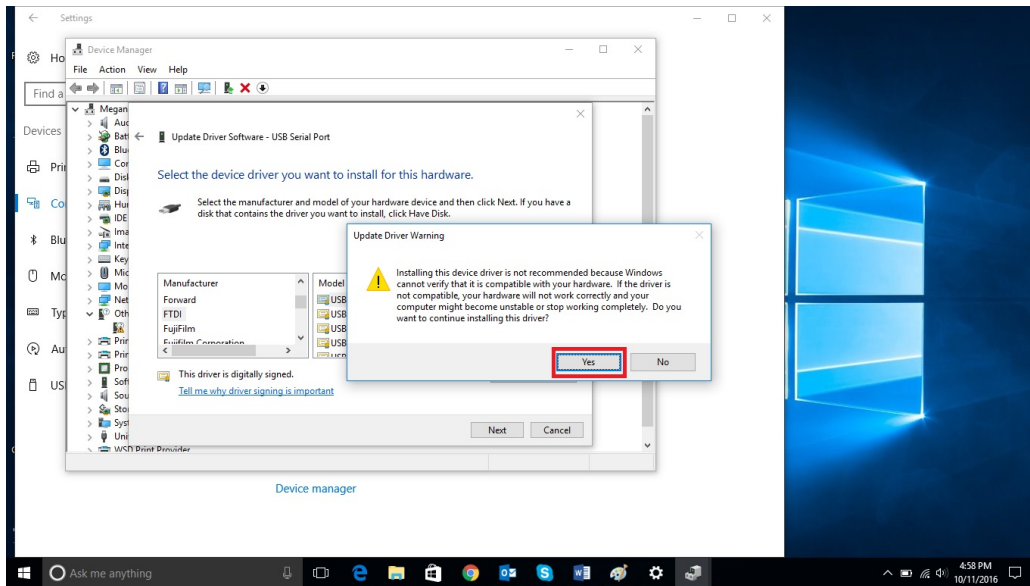
- (Paso 9_2) Selecccione “USB-Controller”



- (Paso 10_2) Seleccione “FTDI” y “USB Serial Converter”



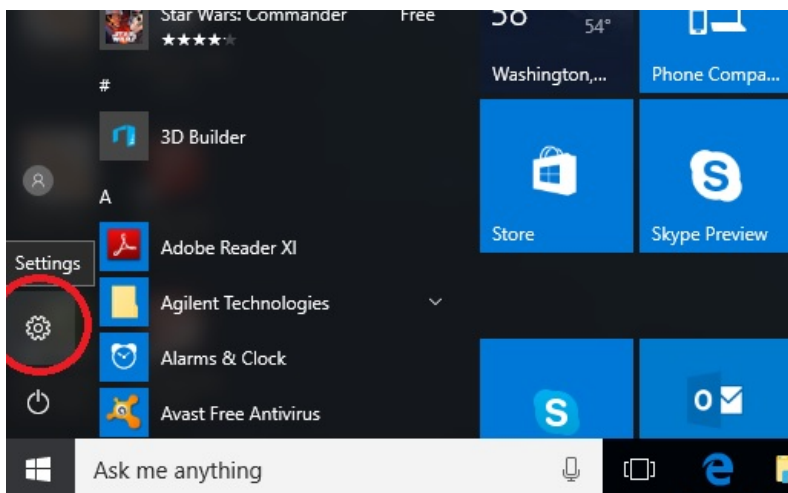
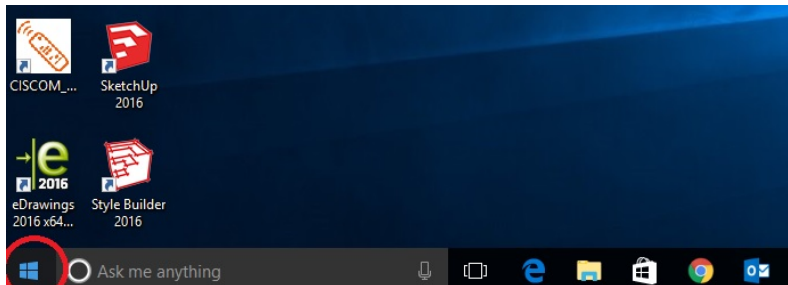
- (Paso 11_2) Ignore la alerta y seleccione “yes” para continuar la instalación

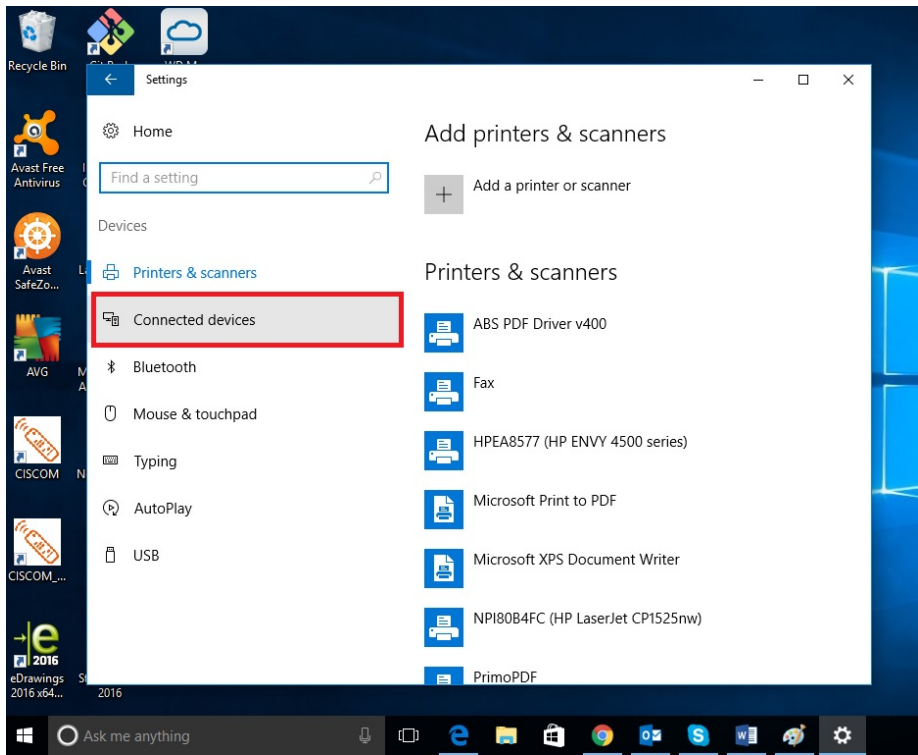
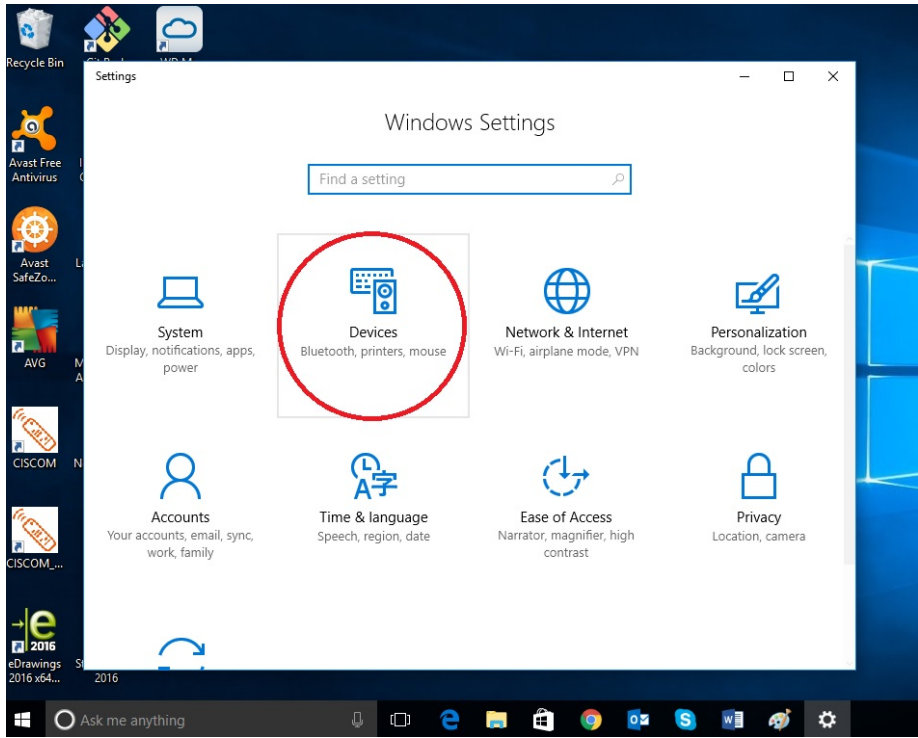


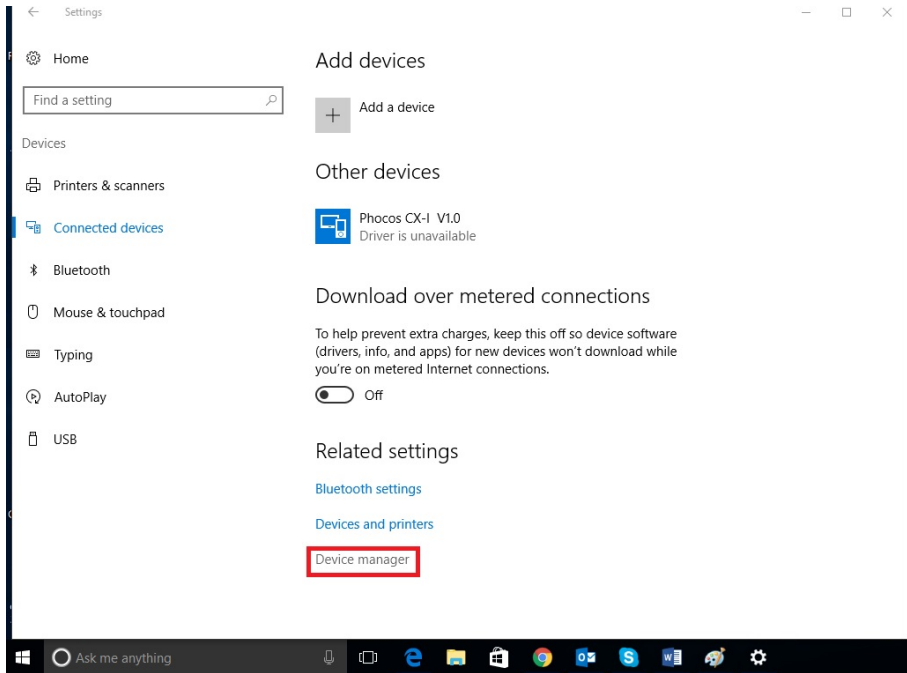
- Segundo paso completado – “USB-Serial Converter” está instalado
- Cierre todas las ventanas (excepto el device manager)

Parte 3: Instalación USB-Puerto Serie

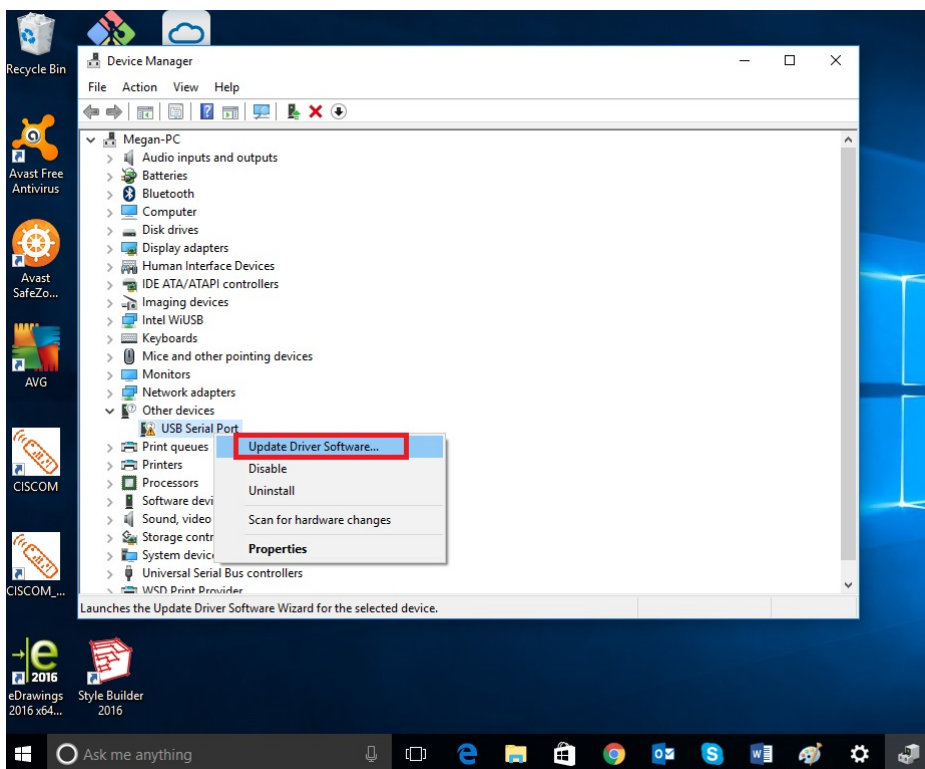
- (Paso 1 – Paso 5) abra el Device Manager en el panel de control de Windows (si no está abierto)



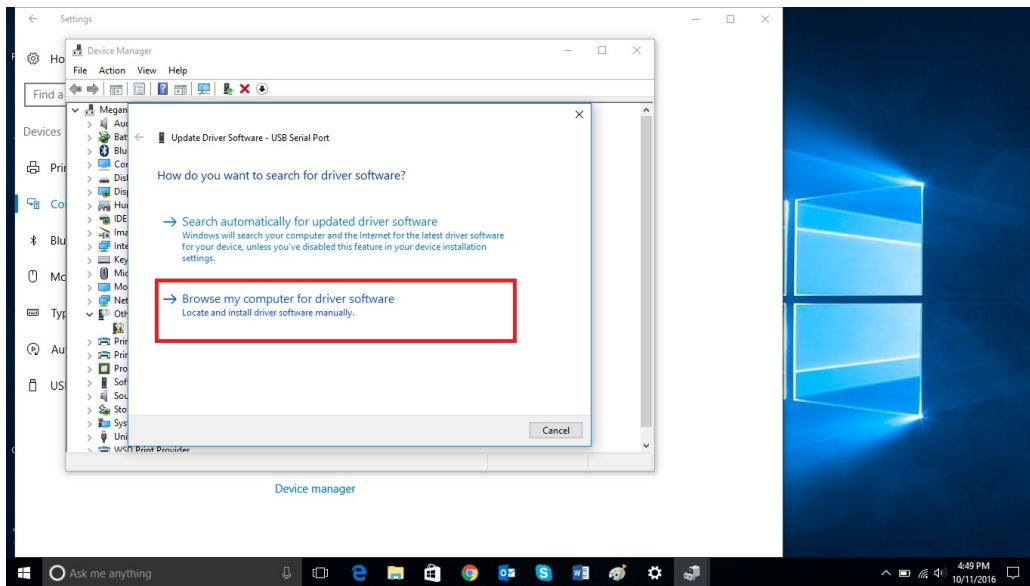




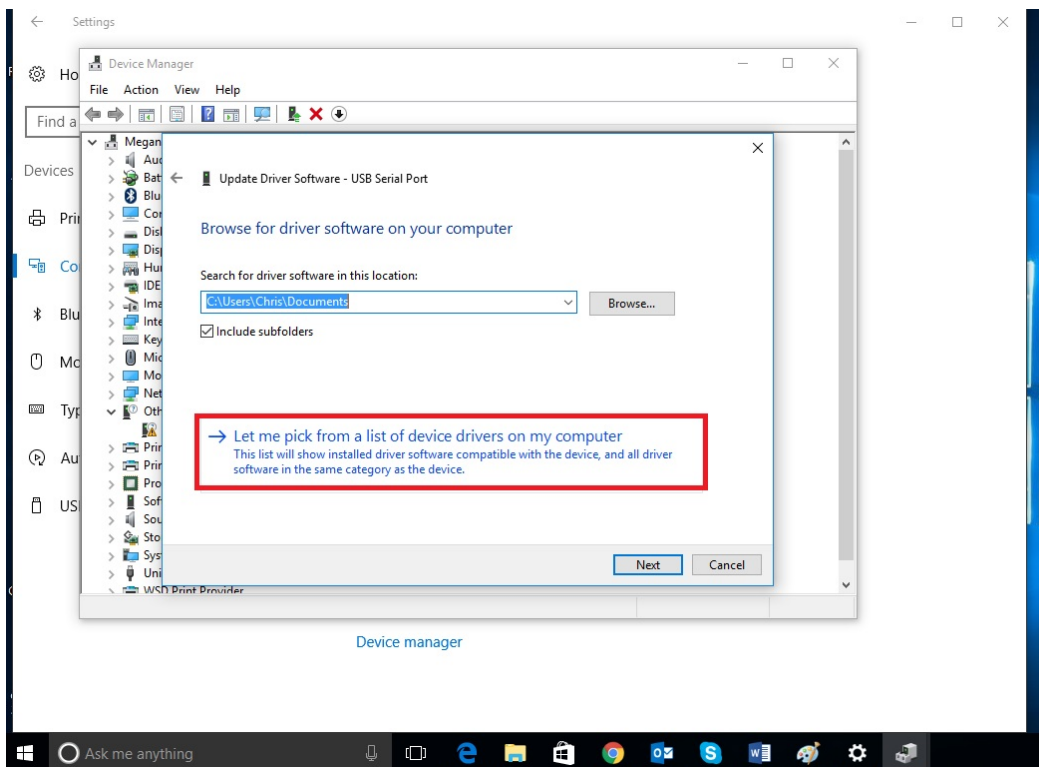
- (Paso 6_3) Marque y click botón derecho en “USB-Serial Port” y seleccione 'Update Driver Software' desde menu.



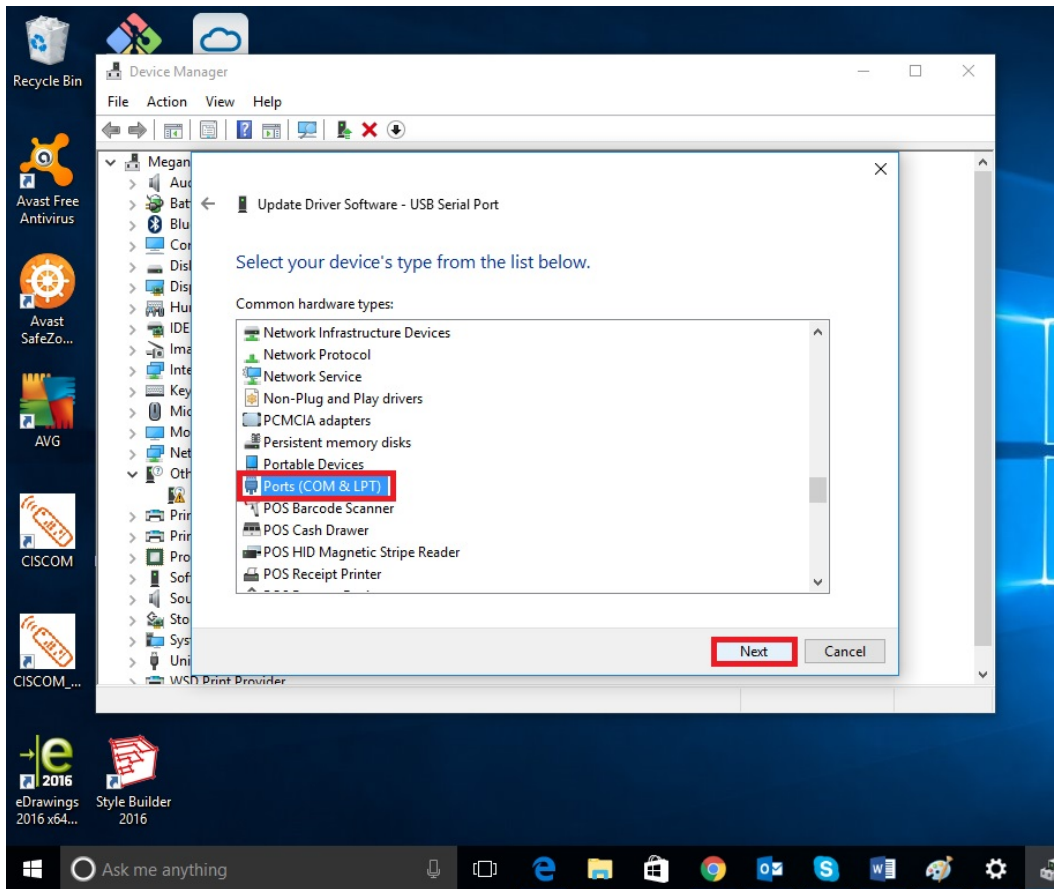
- (Paso 7_3) Seleccione “Browse my computer for driver software” (Buscar en mi computadora el driver software)



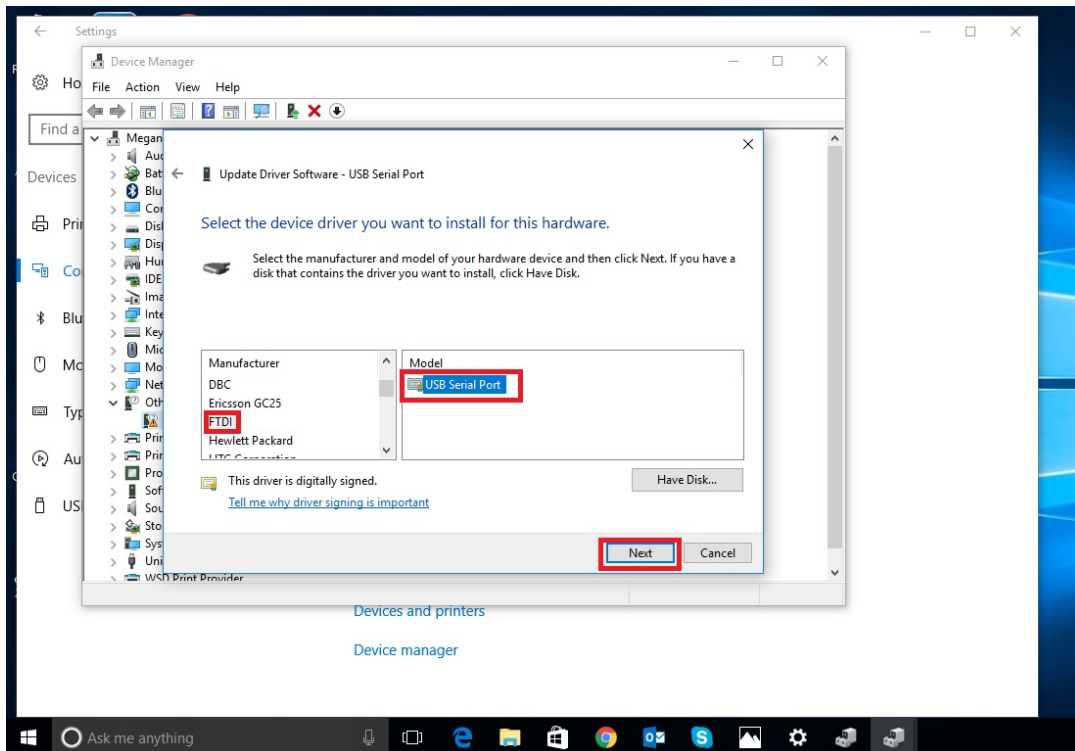
- (Paso 8_3) Seleccione “Let me pick from a list of device drivers on my computer” (Elegir drivers en mi computadora de la lista) en la parte baja de la ventana



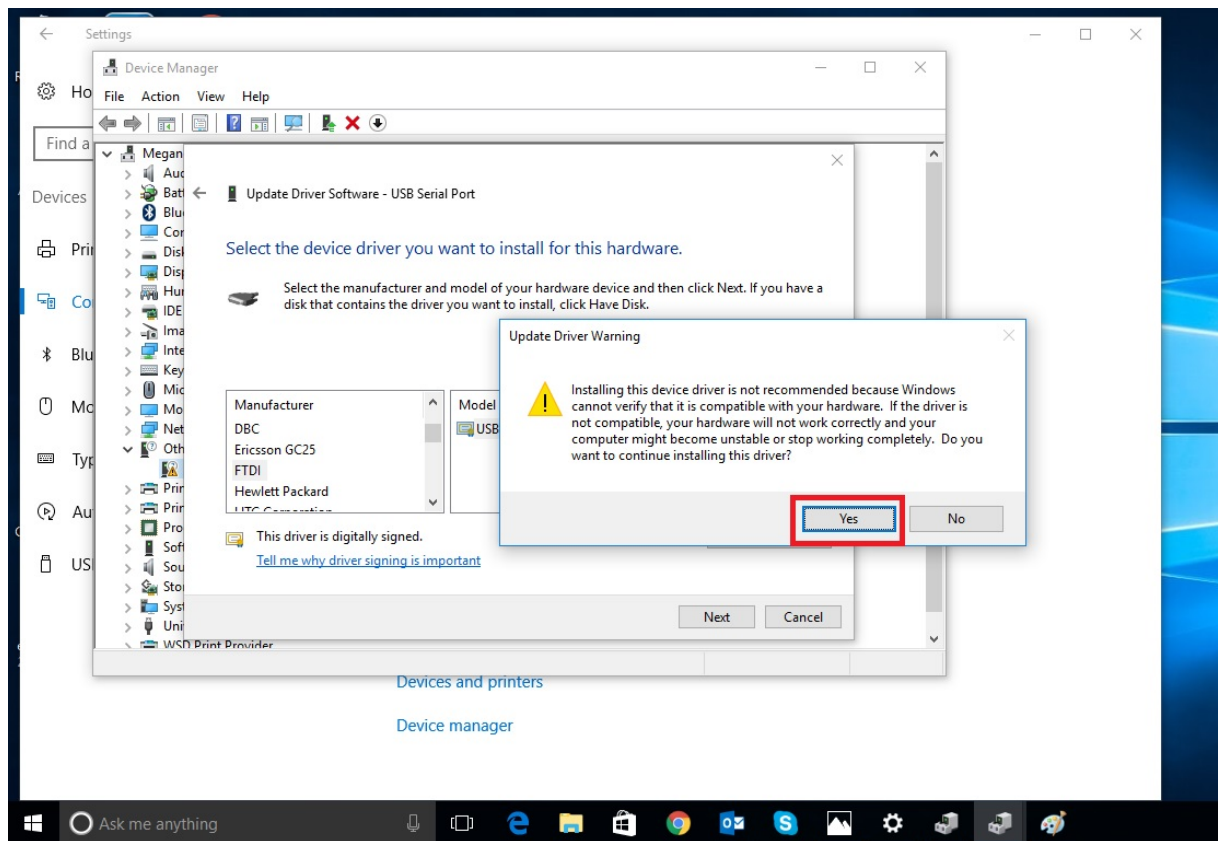
- (Paso 9_3) Seleccione "Ports (COM & LPT)" (Puertos (COM & LPT))



- (Paso 10_3) Seleccione "FTDI" y "USB Serial Port"



- (Paso 11_3) Ignore la alerta y seleccione “yes” para continuar la instalación



- Tercer paso completado – “USB-Serial Port” está instalado
- Cierre todas las ventanas
- Ahora usted puede usar MXI device

Solucion de problemas

- Si la instalación falla en algún momento, asegúrese de que se hayan completado todas las actualizaciones de Windows.
- Si tiene problemas de instalación, no dude en probar un puerto USB diferente.

Sujeto a cambios sin previo aviso
 Versión: 20170201

Phocos AG
 Magirus-Deutz-Str. 12
 89077 Ulm
 Germany
info@phocos.com
www.phocos.com

Cher client,

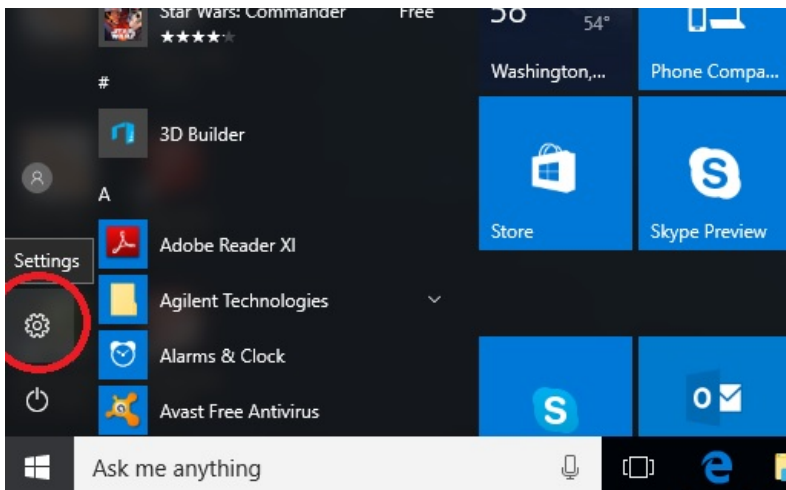
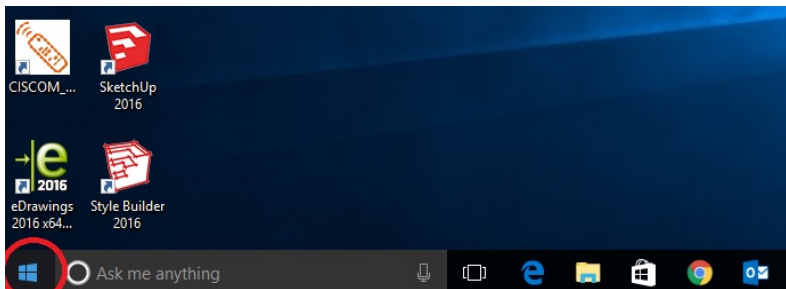
Veillez suivre les étapes suivantes pour installer le pilote MXI sur votre ordinateur WIN10

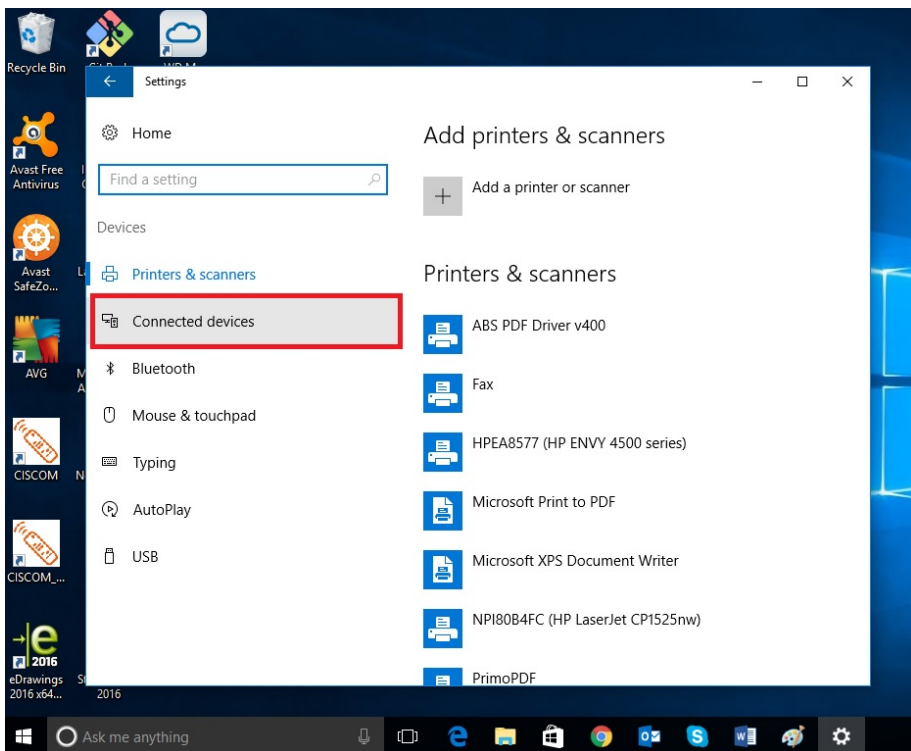
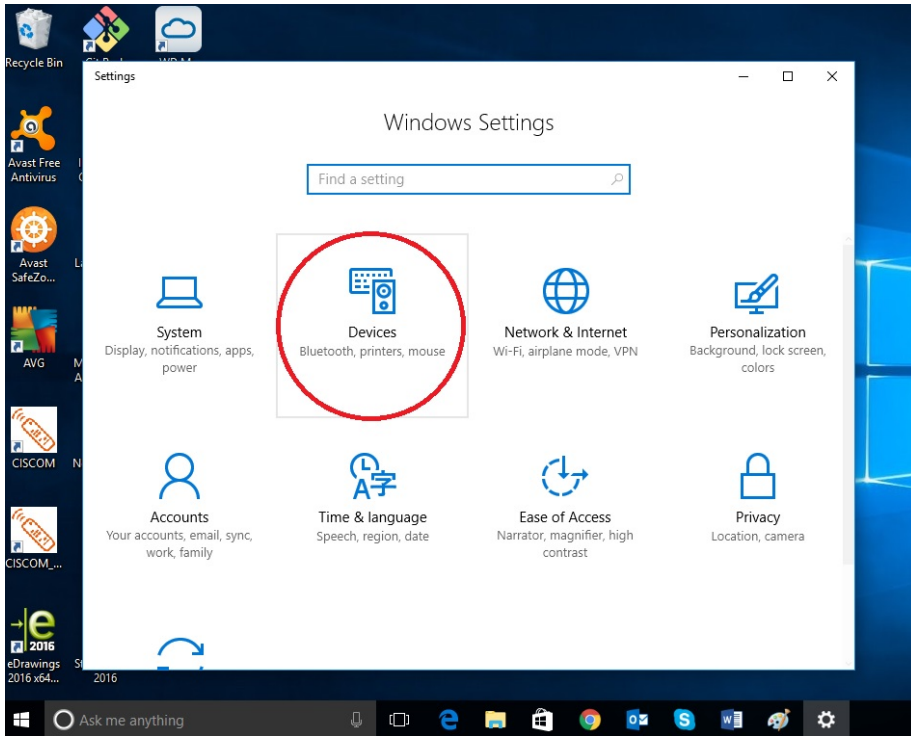
Première partie : Téléchargez et installez le pilote FTDI VCP

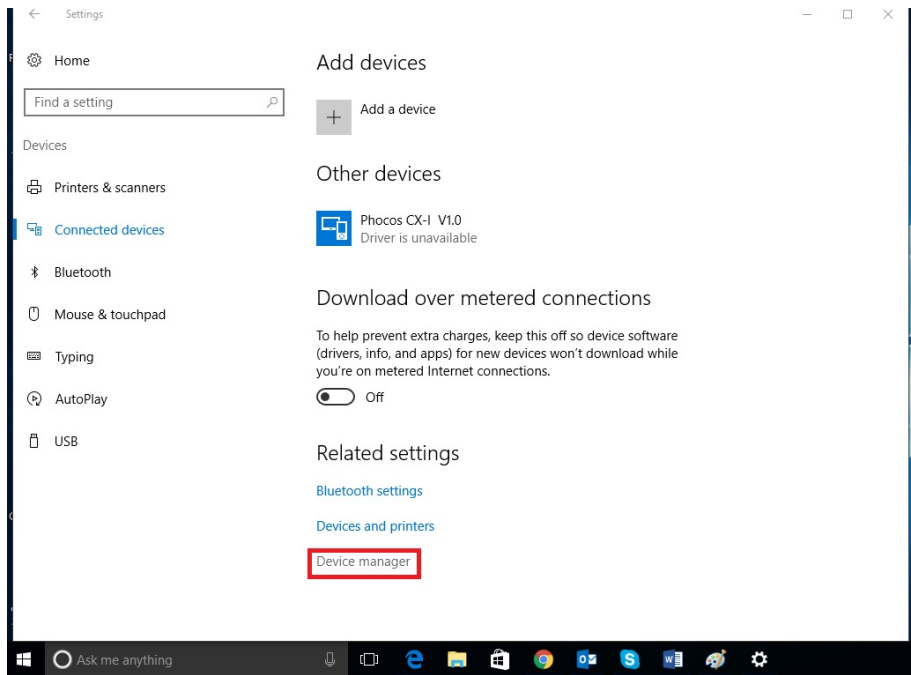
- Téléchargez le pilote FTDI VCP sur
- http://www.ftdichip.com/Drivers/CDM/CDM21224_Setup.zip
- Extrayez tous les fichiers du dossier compressé zip
- Exécutez l'application CDM21224_Setup
- Installez le pilote FTDI VCP

Seconde partie : Installez le convertisseur USB/série

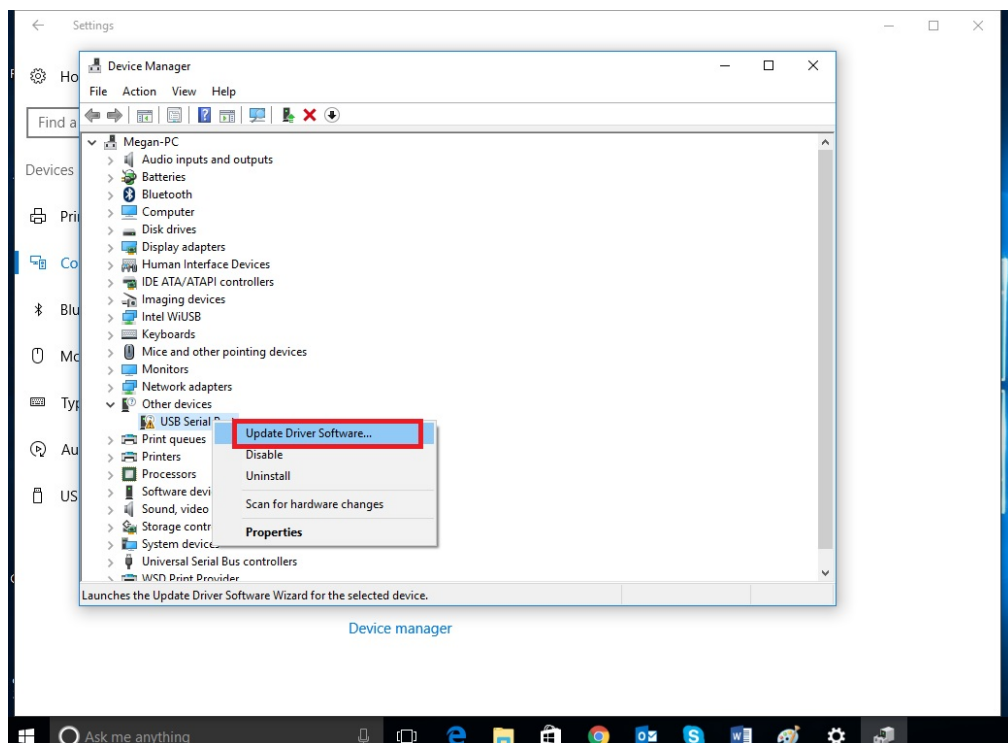
- Branchez le MXI au port USB
- (Étapes 1 à 5) Ouvrez le gestionnaire de périphériques dans le panneau de configuration Windows



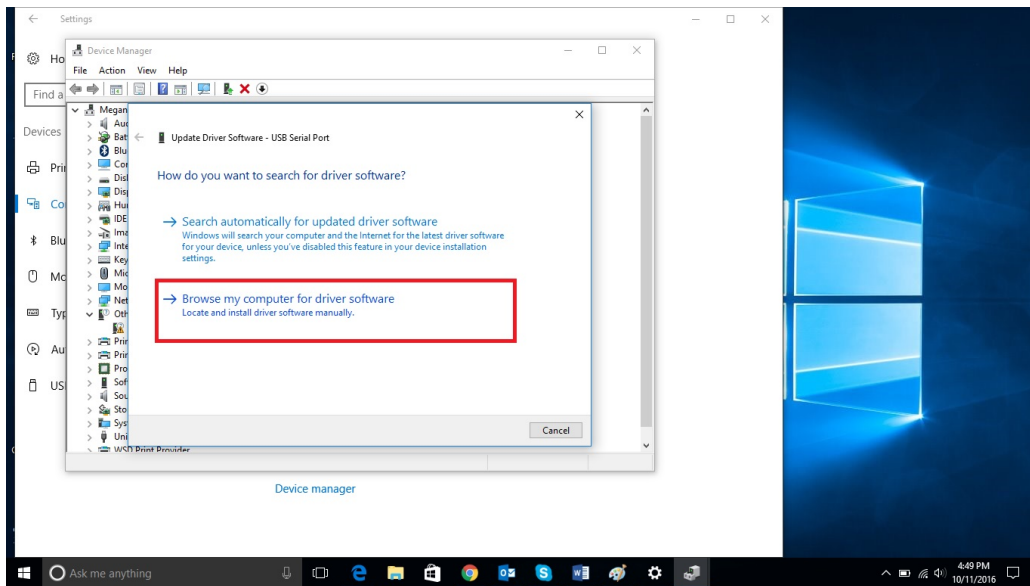




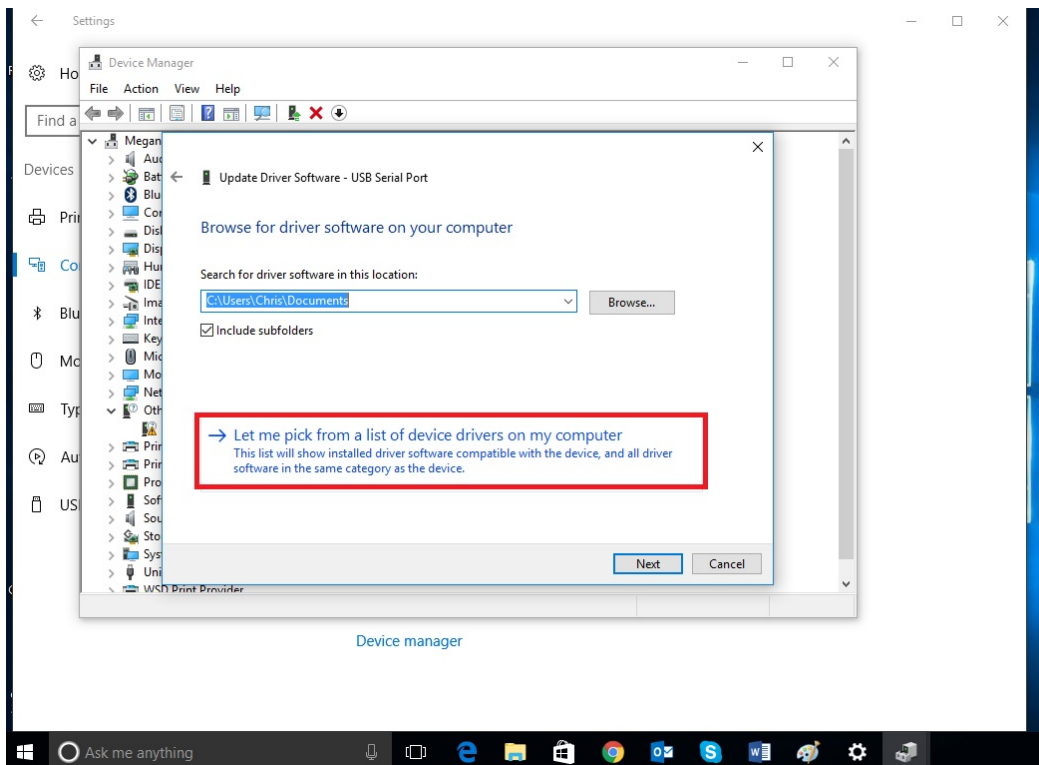
- (Étape 6_2) Localisez et cliquez avec le bouton de droite de la souris sur Phocos MXI, puis sélectionnez 'Update Driver Software' (mettre à jour le pilote) dans le menu contextuel



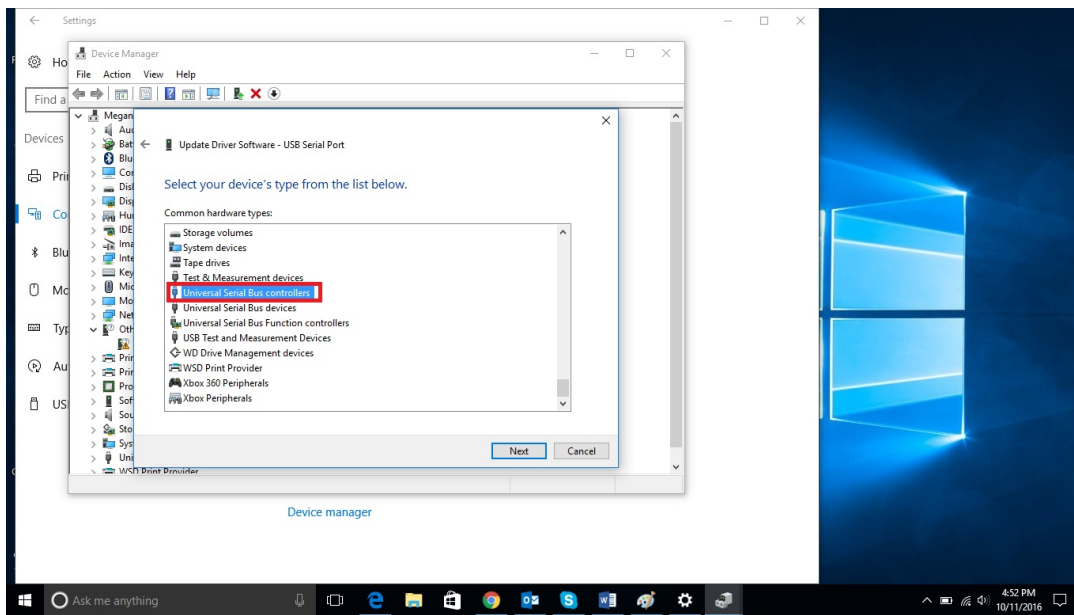
- (Étape 7_2) Sélectionnez “Browse my computer for driver software” (rechercher un pilote logiciel sur mon ordinateur)



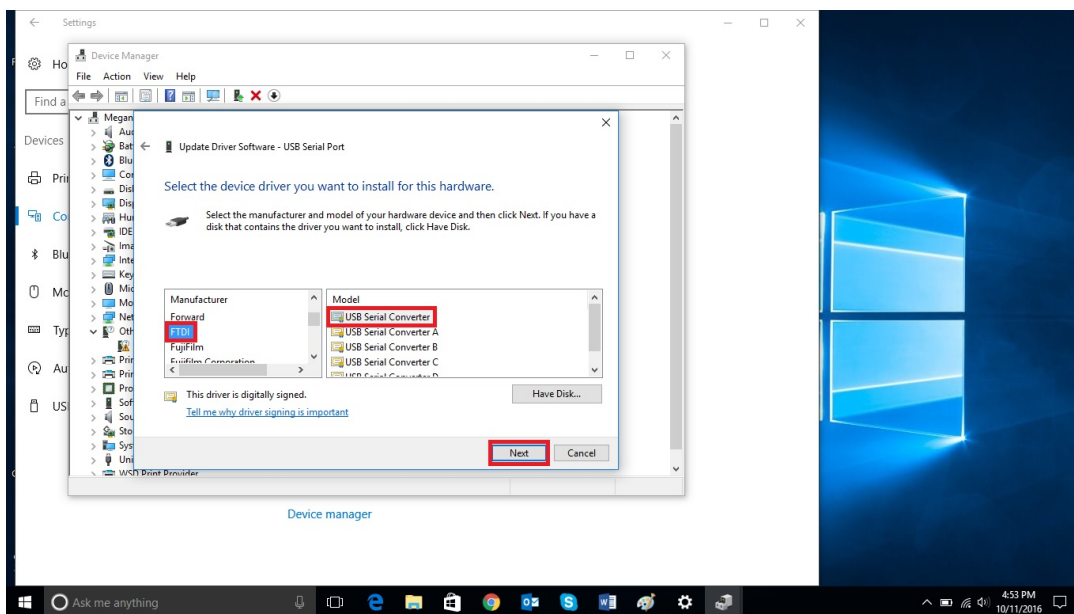
- (Étape 8_2) Sélectionnez “Let me pick from a list of device drivers on my computer” (Me laisser choisir parmi une liste de pilotes de périphériques sur mon ordinateur) en bas de la fenêtre.



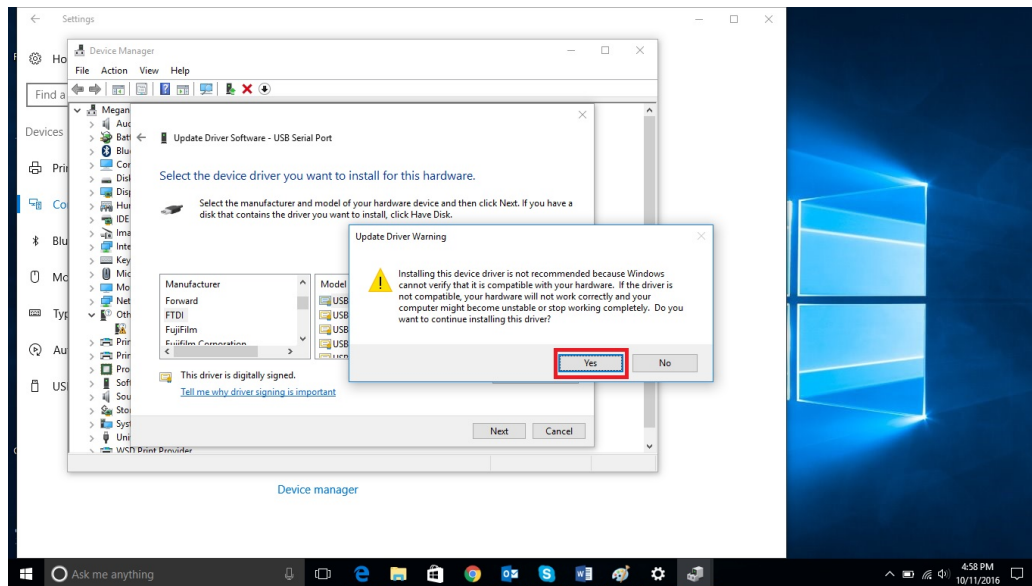
- (Étape 9_2) Sélectionnez “USB-Controller” (contrôleur USB)



- (Étape 10_2) Sélectionnez “FTDI” et “USB Serial Converter” (convertisseur USB/série)



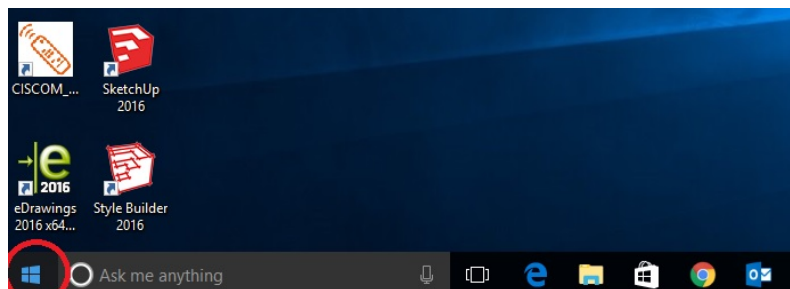
- (Étape 11_2) Ignorez l'avertissement et sélectionnez “yes” (oui) pour poursuivre l'installation

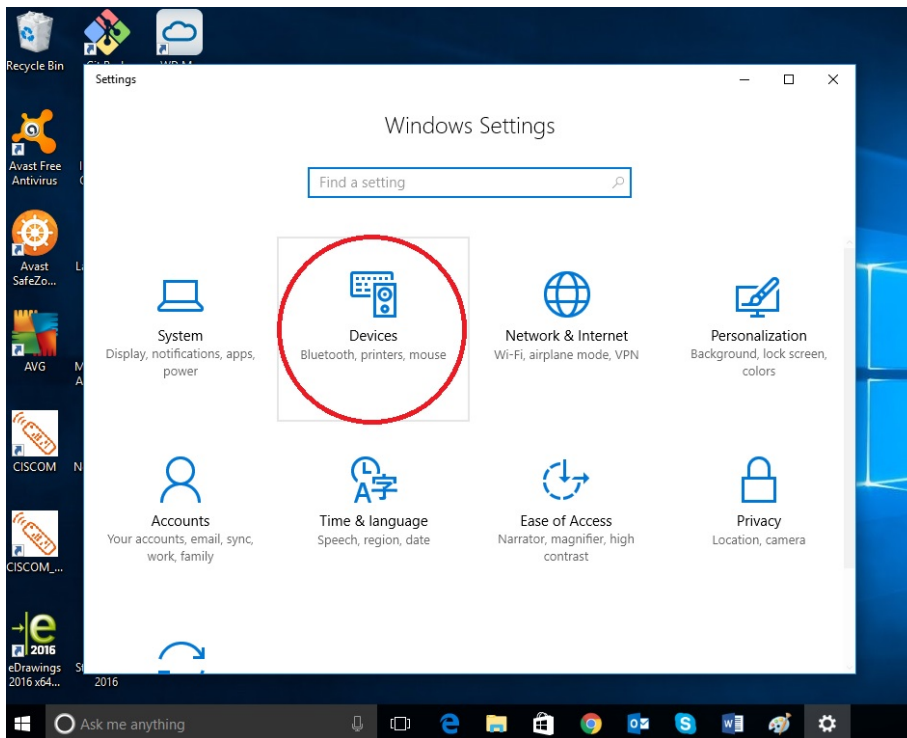
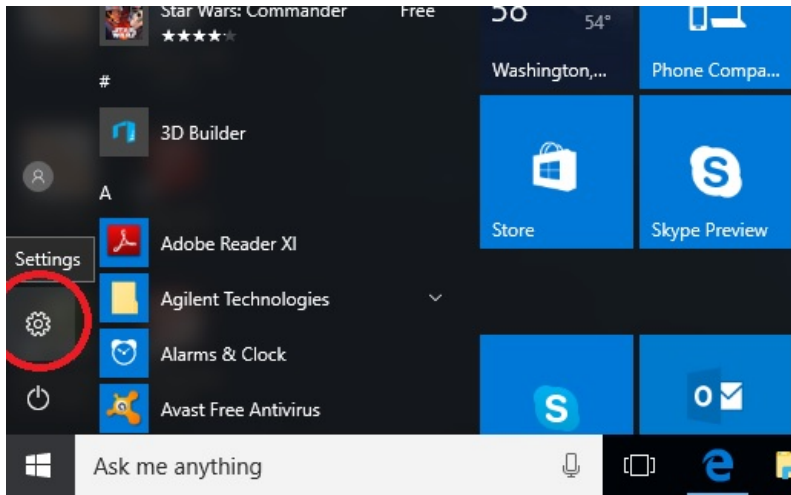


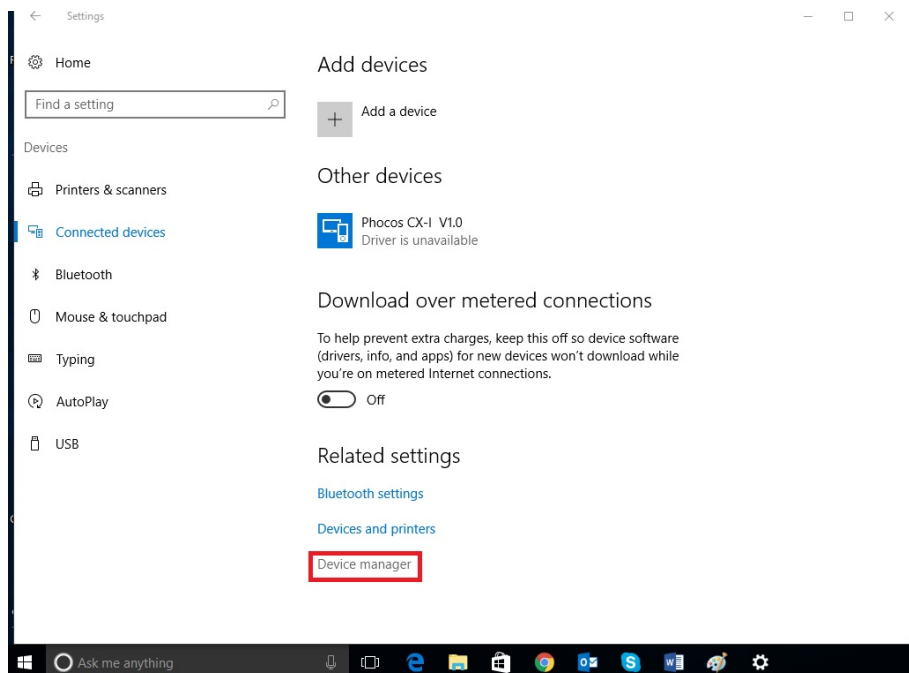
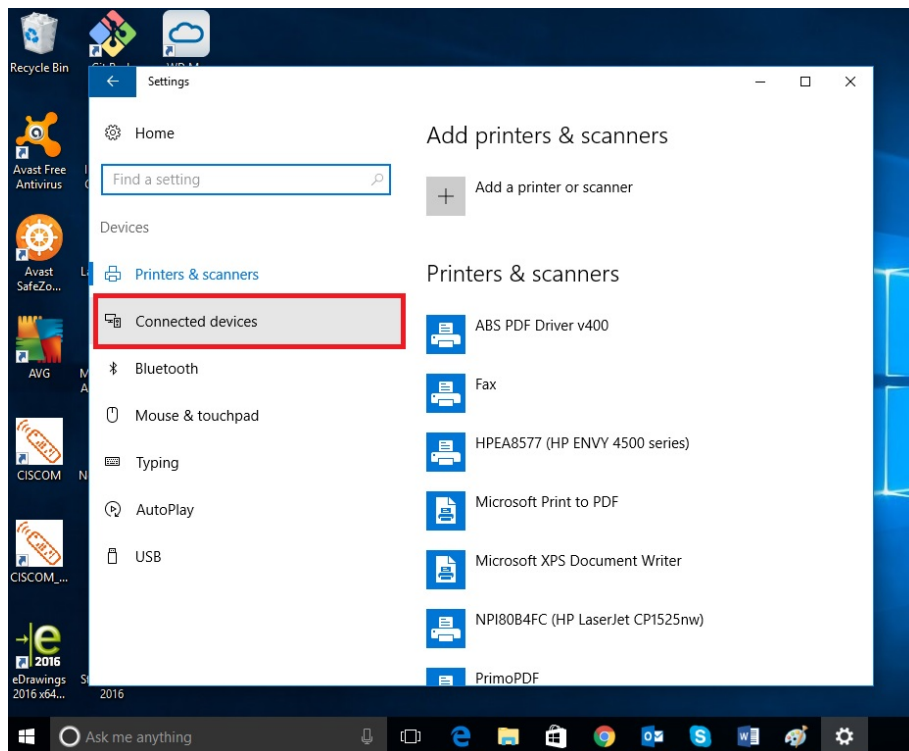
- La seconde partie est achevée – “USB-Serial Converter” (le convertisseur USB/série) est installé
- Fermez toutes les fenêtres (à part celle du gestionnaire de périphériques)

Troisième partie : Installez le port USB/série

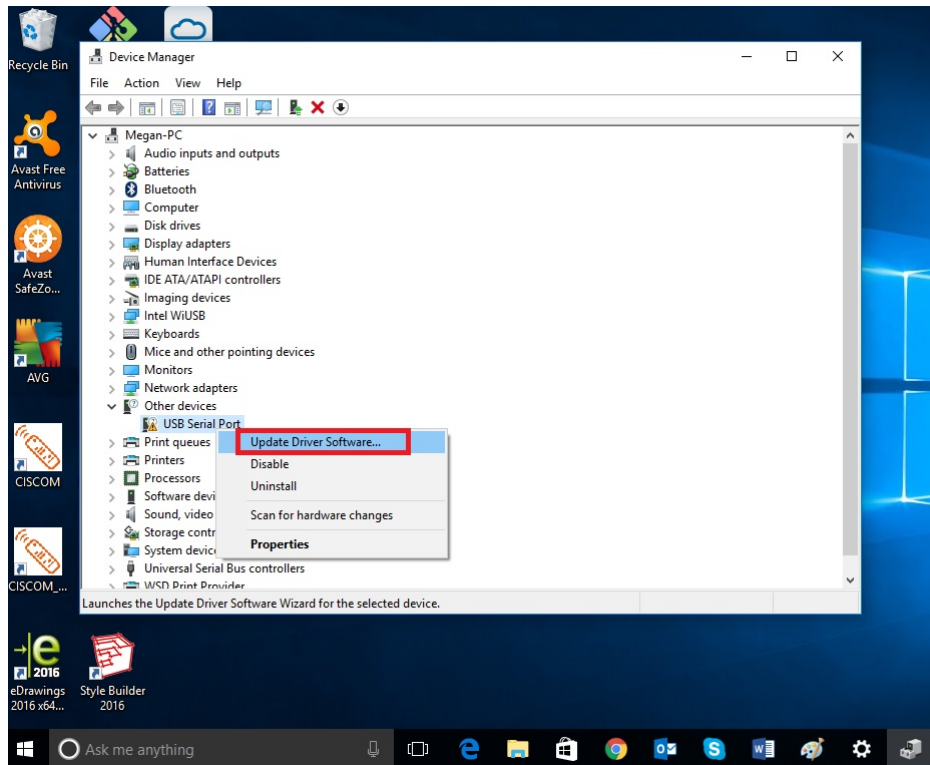
- (Étapes 1 à 5) ouvrez le gestionnaire de périphériques dans le panneau de configuration Windows (s'il n'est pas déjà ouvert)



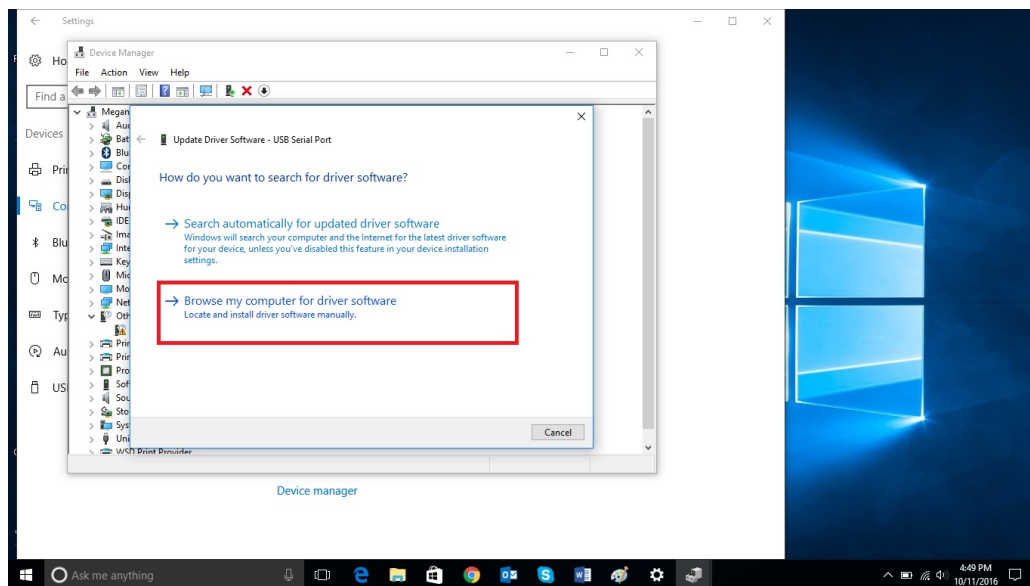




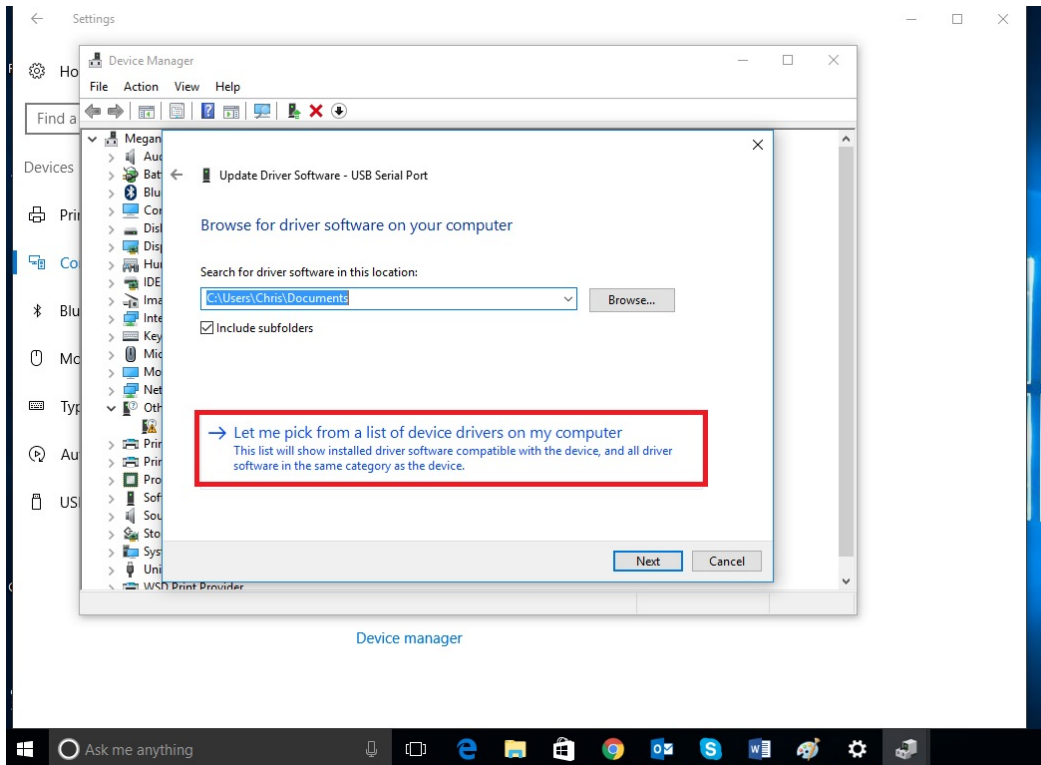
- (Étape 6_3) Localisez et cliquez avec le bouton de droite de la souris sur “USB-Serial Port” (port USB/série), puis sélectionnez 'Update Driver Software' (mettre à jour le pilote) dans le menu contextuel.



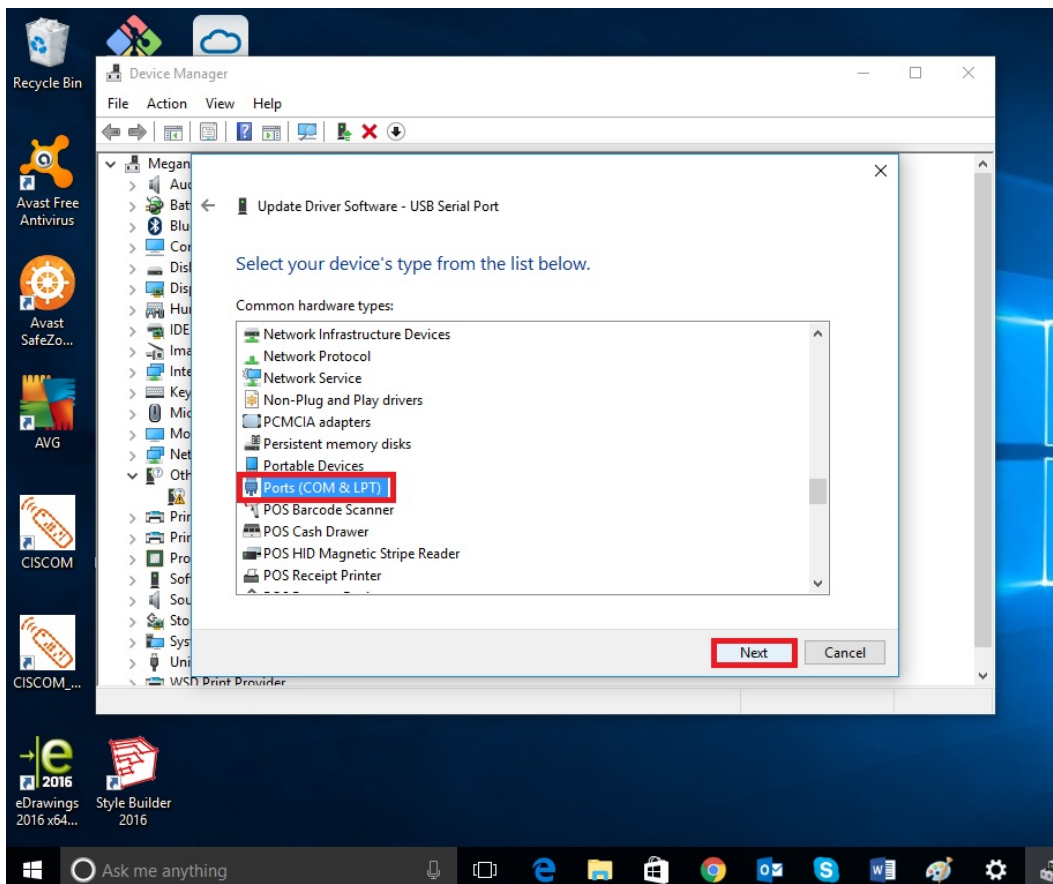
- (Étape 7_3) Sélectionnez “Browse my computer for driver software” (rechercher un pilote logiciel sur mon ordinateur)



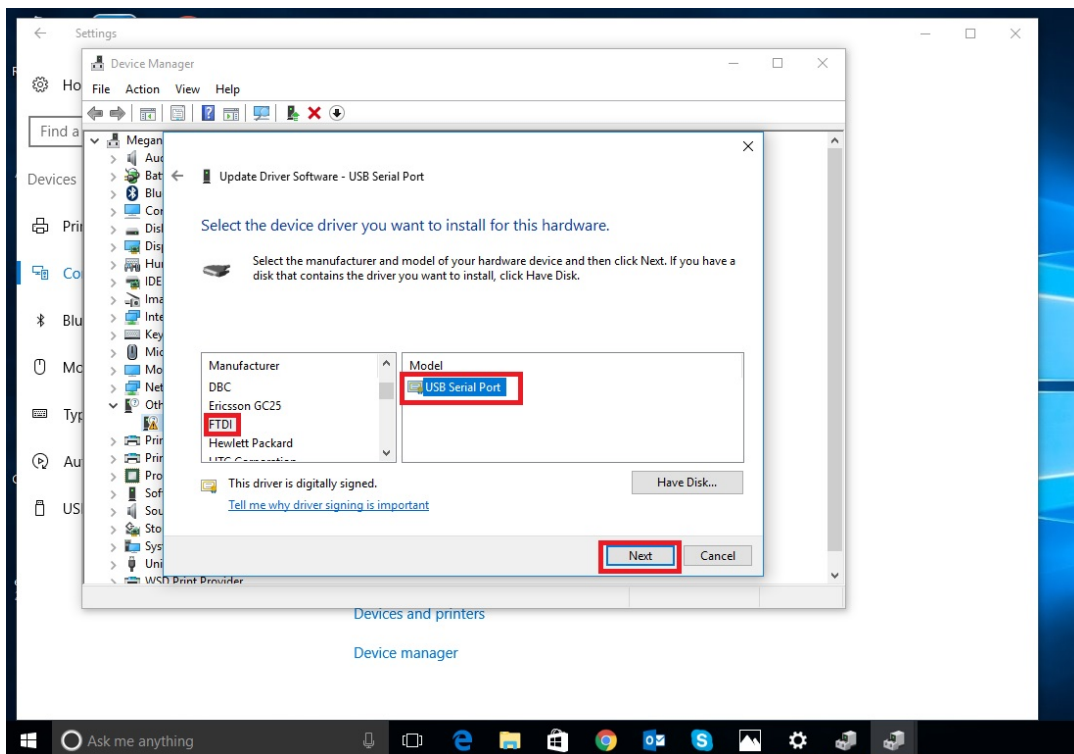
- (Étape 8_3) Sélectionnez “Let me pick from a list of device drivers on my computer” (Me laisser choisir parmi une liste de pilotes de périphériques sur mon ordinateur) en bas de la fenêtre.



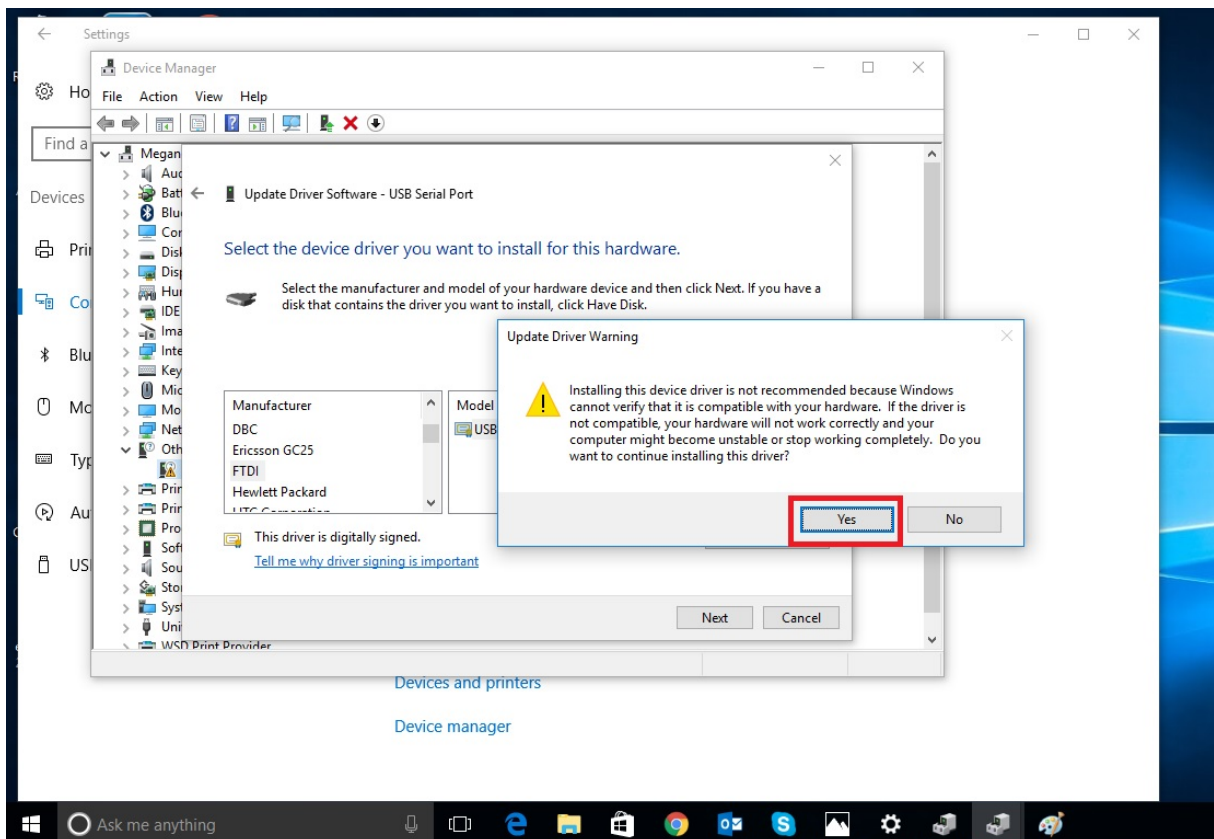
- (Étape 9_3) Sélectionnez "Ports (COM & LPT)"



- (Étape 10_3) Sélectionnez “FTDI” et “USB Serial Port” (port USB/série)



- (Étape 11_3) Ignorez l'avertissement et sélectionnez “yes” (oui) pour poursuivre l'installation



- La troisième partie est achevée – “USB-Serial Port” (le port USB/série) est installé
- Fermez toutes les fenêtres
- Vous pouvez à présent utiliser le MXI

Conseils de dépannage

- Si l’installation échoue, vérifiez que toutes les mises à jour Windows ont bien été effectuées.
- Si vous rencontrez des difficultés lors de l’installation, n’hésitez pas à essayer un port USB différent.

Sujet à modifications sans avis préalable.
Version: 20170201

Phocos AG
Magirus-Deutz-Str. 12
89077 Ulm
Germany
info@phocos.com
www.phocos.com